

The
Millenium
Co

1
9
4
0

30⁰⁰



EX LIBRIS

School Calendar 1939-1940

SEPTEMBER

- 5—School Opens
- 14—Island Queen Excursion
- 15—Beginning of Football Season

OCTOBER

- 6—Leo M. Long (Lyceum Number)

NOVEMBER

- 4—Close of Football Season
- 10—Opening of Basketball Season
- 17—Movie, "Magnificent Obsession"
- 23-24—Thanksgiving Holidays
- 29—High School Operetta

DECEMBER

- 20—Christmas Operetta
- 21—Christmas Holidays Begin at 4 P. M.

JANUARY

- 1-4—Team Tourney (here)
- 2—School Reopens at 8 A. M.
- 5—Movie, "Hoosier School Boy"
- 18-19—Examinations
- 19—First Semester Ends
- 22—New Semester

FEBRUARY

- 9—School Play, "You Can't Take It With You"
- 23—Close of Basketball Regular Schedule
- 29—Mr. Strauss and General Motors Exhibit
- 29—Opening of Sectional Tourney (Tell City)

MARCH

- 1- 2—Sectional Basketball Tourney Continued
- 21-22—Easter Holidays
- 29—Solo Contest (Bloomington)

APRIL

- 5—Annual Band Concert
- 13—District Band Contest

MAY

- 3-4—State Band Contest
- 8—Senior Class Play
- 10—Physical Education Exhibit
- 18—Junior-Senior Reception
- 19—Baccalaurete
- 21-22—Examinations
- 23—Exhibit
- 23—Class Day
- 24—Commencement

The Natlennac
1940

Published by
THE CLASS OF
NINETEEN HUNDRED FORTY

Cannelton High School
Cannelton, Indiana

Class Officers:

President: EDWARD DIXON
Vice-President: LORAIN BALL
Secretary-Treasurer: EDNA CHAMPION
Reporter: KATHLEEN TRAINER

Dedication



We, the class of nineteen-hundred and forty, dedicate this Notlennac to Mr. Alfred Clemens, in appreciation of his enthusiastic interest in the development of the American Legion Field for the youth of our city and his leadership in the Band Uniform Drive.

Cannelton High School



Almost all Cannelton High School classes are held in the above building, erected in 1922. Students attend Art, Music and Journalism classes in the former K. C. building recently purchased by the school. Physical Education classes meet in the gymnasium located in the Community Building.

Board of Education



WILLIAM C. LEHMAN
President



PRESTON MINOR
Secretary



EDWARD MCGINNIS
Treasurer



HARRY DAVIDSON, *Superintendent*
A.B. Indiana Central College 1928, M.S. Indiana University 1937

Another Class Departs

Do you remember the story of the Covered Wagon crossing the plains toward the Golden West?—

"The Coward never started;
The Weak died on the way;
Only the Strong came through!"

Courage for your tasks. That's what's needed. Courage of the lasting kind. There will be times when you will want to quit, but you can't quit; you have unused capacities that cry out within you. The possession of a diploma signifies that your parents, your community and your school have faith in you. Be brave! Be strong! Never give up until you have released your capacities for service and have shared your gifts with others.

—Harry Davidson.



DALE H. BRAUN
Principal
B.S. Indiana University 1935
M.S. Indiana University 1938



MARY LOU BECK
Co-Sponsor
B.S. Indiana University 1939
Physical Education and
Journalism

Faculty



LUTHER WADDY—*Industrial Arts and Mathematics*. B.S. Ball State Teachers College, 1939

ANDREW C. LITTLE—*English and Foreign Language*. A.B. Indiana University 1915.

DON MARKETTO—*Music and Safety Education*. B.S. Indiana State Teachers 1925;
M.S. Syracuse University 1937; Graduate Work, Cincinnati Conservatory of
Music 1927.

HUBERT W. SCOTT—*Commerce and Basketball Coach*. B.S. Central Normal College 1939;
Graduate Work Butler University.

CLIFFORD SWIFT—*Physical Education, Social Studies and Football Coach*. B.S. Butler
University 1937.

MABEL M. DAMM—*Home Economics and Consumers' Education*. B.S. Indiana
State Teachers 1923; Work at Oakland City College; Graduate Work Purdue.

SIDNEY K. GROVES—*Mathematics and Science*. B.S. Purdue University 1937; Graduate Work
Purdue.

MILDRED RUSH—*Art and English*. B.S. Ball State Teachers College 1938.

THEODORE SPRINKLE—*Social Studies*. A.B. Central Normal 1924; Graduate Work
Indiana University.

The Notlennac Staff



MARGARET TRUEMPY
Editor-in-Chief

WILLIAM GUILLAUM
Business Manager

1940 marks the fourth successive year of the publication of the Notlennac, year book of Cannelton High School. The staff is elected each year from the Senior Class.



WAYNE PEKINPAUGH
Advertising Manager

MARJORIE MAY
Associate Editor

VIRGINIA RAMSEY
Sales Manager

BEVERLY LIVERS
Feature Editor



KENNETH CROOK
Sports Editor

LORAIN BALL
Snapshot Editor

KATHLEEN TRAINER
Typist

IDA SCHURTER
Typist



C L A S S E S

'40 Seniors



BILLY ALDRIDGE—*Small Fry*

Basketball 4-3-2; Sports Club 4-3-2; Baseball 4-3; Checker Club 3-2; Hi-Y 4; *Hi-Life* Staff 3; Football 3; Vice-President 3.
Transfer: Tell City High School: Basketball 1.

MARJORIE LEE MAY—*Marge*

Band 4-3-2-1; Solo Contest 4-3-2; Chorus 4-2-1; School Orchestra 3-2-1; Brass Sextet 2-2; Assistant Editor *Nottlennac* 4; *Hi-Life* Staff 4; Operetta 4; Honor Roll 4; Dramatics 3; G. A. A. 1; Woodwind Quintet 2.



MARGARET TRUEMPY—*Trump*

Band President 4; Band 4-3-2-1; Chorus 4-2-1; "All School" Plays 4-3; Popular Orchestra 4-3; *Nottlennac* Editor 4; Office Girl 4; Thespians 4; *Hi-Life* Staff 4; G. A. A. 1; Operetta 4.

HAROLD FUCHS—*Duke*

Hi-Y 3-2-1; Baseball 3; Chefs Club 1.



KENNETH D. CROOK—*Ken*

Hi-Y 4-3-2; Band 4-3; Assistant Editor of *Hi-Life* 2nd Semester 4; Science Club President 4; *Nottlennac* Staff 4; Athletic Club 2; Vice-President 1; Chef Club 1; Honor Roll 1.

LORAIN BALL—*Pork Chops*

Vice-President 4; Dramatics Club 4; Photography Club 4; "All School" Play 4; *Nottlennac* Staff 4; Thespians 4.
Transfer: Twinsburg High School: Plays; Girl Reserve 3; A Cappella Choir 3; Chorus 3-2-1; Dramatics 3-2-1; Latin Club 2-1.



VIRGINIA VERLEE RAMSEY—*Ram*

Band 4-3-2-1; *Nottlennac* Staff 4; *Hi-Life* Staff 4; High School Chorus 4; Operetta 4; Fix-it Club 2; Girl Reserve 1; G. A. A. 1.

ROBERT STILWELL—*Bob*

Dramatics Club 4; Football 3; Hi-Y 3; Basketball 2; Sports Club 2.

'40 Seniors

JEAN ARMSTRONG—*Jeanie*

Librarian 4; Fix-it Club 3; Home Ec. Club 2; Chorus 1.



WANDA GWENDOLYN BADGER—*Irish*

Science Club 4; Photograph Club 4.
Transfer: Cooter High School: Basketball 1; Glee Club 2.



EDWARD CASH—*Sawbones*

Sports Club 4-3-2-1; Hi-Y 4-3-2; Student Manager Basketball and Football 4-3; "All School" Play 4; *Hi-Life* Staff 3.

EDNA CHAMPION—*Peggie*

Dramatics 4-3-2; Librarian 4-3; Secretary-Treasurer 4; Fix-it Club 2; Arts and Craft 1.



HOMER GILBERT CLEMENT—*Oswald*

Popular Orchestra 4-3-2-1; Solo Contest 4-3-2-1; Band 4-3-2-1; School Orchestra 3-2-1; Checker Club 1.

GEORGE CONNOR—*Scatterbrain*

Band 4-3-2-1; Popular Orchestra 4-3-2; High School Chorus 4-2; Operetta 4; Dramatics Club 2-1; "All School" Play 3; Checker Club 1.



EDWARD DIXON—*Dixie*

Band 4-3-2-1; Sports Club 4-3-2; Baseball 4-3-2; Class President 4-3; Football 4-3; Basketball 4-3; Popular Orchestra 4-3; *Hi-Life* Staff 4.

HAROLD FRANZMAN—*Stix*

Band 4-3-2-1; Thespians 4-3-2; "All School" Plays 4-3-2; Baseball 4-3; Orchestra 3-2; Dramatics Club 3-2; *Hi-Life* Staff 1st Semester 4; Chorus 4; Honor Roll 3; Senior Play 3; Hi-Y 2; Chefs Club 1; Sports Club 1.

'40 Seniors



HUGH GARDNER FREEMAN—*Porky*

Librarian 4; "All School" Play 4; Chorus 3;
Sports Club 2; Basketball 2.

DORRIS GIBBS—*Slewfoot*

Dramatics 4-3-2; Band 4-3-2; Chorus 4; *Hi-Life* Staff 4; G. A. A. 2-1; Crafts Club 2.



JUANITA PEARL GLENN—*Wa-Hoo*

G. A. A. 4-3-2-1; Chorus 1.

WILBER GRUVER—*Junior*

Athletics Club 3-2-1; Basketball 3-2; Boy
Scouts 1.



WILLIAM F. GUILLAUM—*Bill*

Honor Roll 4-3-2-1; Basketball 4-3-2; *Hi-Life*,
Editor 1st Semester, Advertising Manager 2nd
Semester 4; "All School" Play 4; Business Man-
ager *Nollennac* 4; Thespians 4; Hi-Y 4; Har-
monica Club 2; Secretary-Treasurer 2.

CHARLES HANKS—*Judge*

Sports Club 2-1; Checker Club 1.



THOMAS HAY—*Grey*

Sports Club 4-3-2-1; Checker Club 3-2-1.

BILLY L. HECK

Sports Club 3; Rifle Club 2.

'40 Seniors

H. OTHO HICKS—*Chum*

Hi-Y 4-3-2; Boy Scouts 4-3-2; Science Club 4-3-2; Harmonica 2-1; Chorus 2; Checker 1.



KATHRYN JELLISON—*Kitty*

Librarian President 4-3; Fix-it Club 3; Home Ec. Club 2; Chorus 2; G. A. A. 1; Paper Flower Club 1.



CHARLES ERNEST KEISER—*Boobie*

Librarian 4-3; Dramatics 4; *Hi-Life* Staff 1st Semester 4; Crafts 3; Chef Club President 2; Checker 1.



VIRGINIA LENORE LEHMAN—*Ginger*

Band 3-2-1; Chorus 4; Operetta 4.

BEVERLY ELAINE LIVERS—*Bev*

Band 4-3-2-1; Honor Roll 4-3-2-1; "All School" Plays 4-3; Popular Orchestra 4-3; Chorus 4-1; School Orchestra 3-2; *Notlennac* Staff 4; *Hi-Life* Staff 4; Thespians 4; Operetta 4; Solo Contest 3; Dramatics 3; Saxophone Quartet 3.



ATHLENE NUGENT—*Wookie*

Librarian 4; Science Club 4; Paper Flower Club 2; Chorus 1; G. A. A. 1.

VERNON ROBERTS PECKINPAUGH—*Blondie*

Science Club 4-3-2; Photography Club 4-3; Chefs Club President 2; Checker Club 1.

ALBERT WAYNE PEKINPAUGH

Band 4-3-2; Orchestra 3-2; Chefs Club 2-1; Chorus 4; Dramatics President 4; *Hi-Life* Staff 4; *Notlennac* Staff 4; Checker Club 2; Tumbling Club 2; Sports Club 1.

'40 Seniors



MARY POPP

Vice-President Librarian 4-3; Honor Roll 3-2;
Science Club 4; *Hi-Life* Staff 4.

McKINLEY ROBERTS—*Mickey*

Baseball 4-3-2-1; Sports Club 4-3-2-1; Foot-
ball 4-3; Basketball 3-2.



IDA LOUISE SCHURTTER

Honor Roll 4-3-2-1; *Nottlennac* Staff 4; Office Girl
4; *Hi-Life* Staff 4; Librarian 3; Fix-it Club 2;
Class Representative 2.

ROBERT ELMER SCHWARTZ—*Dump*

Sports Club 4-3-2; Football 4-3; Baseball 3;
Checker Club 1.



EARL TATE—*Spud*

Hi-Y 3-1; Basketball 2; Checker Club 1.

KATHLEEN TRAINER—*Gracie*

Honor Roll 4-3-2-1; *Nottlennac* Staff 4; Of-
fice Girl 4; Class News Reporter 4; Fix-it
Club 3; Class President 2; Class Represen-
tative 2; Vice-President 1; Chorus 1.



JESSIE MAY WAGNER—*Jess*

Photography Club 4; Operetta 4; Dramatics Club
3; Chorus 2; Fix-it Club 2; Girl Reserve 1.

LAVERA JEAN YOUNG—*Hickory*

Librarian 4; Fix-it Club 2.

Junior Class



First Row: Ida Mae Plock, Clifford Stamp, Casper Hayden, Maurice Reed, Marjorie Bolin, Theola Gerber, Agnes Thiry.

Second Row: Bobby Miller, Rachelle Swihart, Doris Hodde, Jean Fuchs, Alta Ruth Hall, Lucille Laflin, Ella Louise Fuchs.

Third Row: William Bennett, James Clemens, Beatrice Couch, Opal Peckinpaugh, Walter Hargis, Anna Eva Julkenbeck, Shirley Pekinpaugh, Freddie Franzman.

Fourth Row: Ralph Bolin, Harry Lee Huber, Charles Franzman, Kenneth Ahl, Michael Fishback, Hester Allen, Dorothy Mosby.

Fifth Row: Dale Harris, Clarence Hall, Joe Odell, Joe Lynch, Buddy Hafele, Georgia Lee Hemphill.

Sixth Row: Wilfred Board, Homer Groves, Delvern McFall, William Sims, Joe Paulin.

Not in picture: Helen Jean Hargis.

CLASS OFFICERS

President.....Doris Hodde
Vice-President.....Harry Lee Huber
Secretary.....Freddie Franzman
Treasurer.....Beatrice Couch

Sophomore Class



First Row: T. Adams, J. Hay, J. Egnew, W. Harris, A. Hargis, L. Coyle, J. Thomas, W. Young, E. L. Wagner, M. McFall. *Second Row:* S. J. Aldridge, M. J. May, W. Damron, M. M. Anson, L. Cordrey, J. Scull, L. Mitchell, B. Heck, E. McMains, C. Doughty. *Third Row:* L. Reid, K. Tate, M. Jarboe, E. L. Sodrel, C. Sterett, G. Harper, W. McFarling, W. Clement, J. Paulin. *Fourth Row:* J. Popp, T. Burton, P. Ungerecht, E. Keiser, E. Henning, Z. Tinsley, E. J. Brunner, N. Heffner. *Fifth Row:* F. Patterson, R. McLain, G. Fuchs, J. Leaf, O. Zellers, J. Hargis, A. Livers, M. M. Schraner. *Sixth Row:* R. Clements, O. Allen, W. Maier, C. Alvey, G. Hufnagel, K. Young, C. Schmidt. *Not in picture:* L. M. Glenn, B. Stamp, H. Tindle.

President, LATHROP REID; *Vice-President,* JACK HAY; *Secretary-Treasurer,* FRANK PATTERSON.

Freshman Class



First Row: C. Smith, E. Champion, D. Firestine, R. Futter, M. M. Richey, H. Daum, D. Ramsey, R. Hay, B. Stamp, M. Rausch. *Second Row:* E. Burton, V. May, H. Ramsey, M. Northener, R. Hall, B. Plock, L. F. Sapp, A. Wilber, R. Hanks, G. Huffine. *Third Row:* R. Rausch, L. Alvey, C. Dhonau, G. May, H. Thorn, J. Crook, A. Park, D. Zellers, A. Thomas, L. Mosby. *Fourth Row:* M. M. Farquhar, R. Franzman, L. M. Weatherholt, W. C. Young, D. Ball, D. Champion, R. Northener, N. L. Ungerecht, D. Van Conia, C. Hale. *Fifth Row:* A. Polk, E. White, B. Van Hoosier, J. Hawkins, A. Mallory, R. Hall, H. Glenn, C. Mogan, A. Young, R. Thorn. *Sixth Row:* N. Davis, H. Truempy, H. Hafele, L. Connor, H. Voyles, C. Vogt, R. McFall, E. Schwartz, C. Sweeney. *Not in picture:* D. Brown, R. Hanks, M. Smith, V. Wilson, J. Pruitt.

President, HAROLD GLENN; *Vice-President,* HARGIS HAFELE; *Secretary-Treasurer,* DORIS BALL.

Eighth Grade



First Row: Aubrey Hawkins, Harold Thomas, Bobby Perry, June Minto, Pauline Morris, Nadine Kincaid, Frances Firestine. *Second Row:* Oscar Dixon, Bobby Powers, Opal Nugent, Christian Fuchs, Jack Sprinkle, Evelyn Stamp. *Third Row:* Mildred Bolin, Maurice Yaggi, Mabel Dixon, Imogene Skinner, Mabel Ruth Powell, Verna Gunn. *Fourth Row:* Doylray Johnson, Paris Johnson, Arthur Burns, Mary Ida Robson, Wilma Heck, Viola Bolin. *Fifth Row:* Alice James, Raymond Gunn, Charles W. Clark, Iva Bolin, Cora Freeman. *Sixth Row:* Hazel Thorn, Ralph Dixon, William Powers, Floyd Gunn, Mary Louise Lively.

Seventh Grade



First Row: Lucille Storm, Vivian Lahee, Imogene Freeman, Eloise Quick, Dorothy Jean Wilber, Mildred Ruth Pohl, Anita Nugent, Martha Mae Heck. *Second Row:* Dorothy Lee Futter, Ethel Marie McDaniel, Rose Marie Dunn, Audrey June Perry, Catherine Lahee, Helen V. Freeman, J. C. Huff, Edwina Hale. *Third Row:* Charles Jones, Elizabeth Davis, Lenora Maier, Frances Graybill, Mary Ruth Wilson, Ethel Thorn, Junior Evans. *Fourth Row:* Louis Scarborough, Anna Elizabeth Lively, Lucille Raetz, Dorcas Davis, Henrietta Hall, Mary Emma Harris. *Fifth Row:* Mildred Ellis, David Combs, Robert Patmore, Carl Gunn. *Sixth Row:* Charles Schneider, Bill May, Kenneth Smith, Chester Seals, Freddie Kendall. *Not in picture:* William Hall, Lee Allen Pyle, Oliver Thomas.

Myers' Grade School



Upper left: First Grade, Julia Franzman, teacher.

Upper right: Second Grade, Pearl Hafele, teacher.

Middle left: Third Grade, Dorothy May, teacher.

Middle right: Fourth Grade, Irvin Ramsey, teacher.

Lower left: Fifth Grade, Margaret Fuchs, teacher.

Lower right: Sixth Grade, Foster Park, teacher and principal.



A T H L E T I C S

"Hail to Our Bulldogs"



First Row: Denny Ramsey, Gilbert Harper, Joe Paulin, Harold Glenn, McKinley Roberts.

Second Row: Edward Cash, Student Manager, Clarence Alvey, Buddy Hafele, Clifford Swift, Coach, Lathrop Reid, Harry Huber, James Clemens, Student Manager.

Third Row: William Sims, Harmon Voyles, Ernest Schwartz, Edward Dixon, Larry Connor, Robert Schwartz.

Yea, Gold!



RACHELLE

SEASON RECORD

Cannelton..... 7	Oakland City.....20
Cannelton.....25	Rockport.....18
Cannelton..... 7	Tell City.....32
Cannelton.....25	Dale.....40
Cannelton.....12	Mt. Vernon.....28
Cannelton.....22	Leitchfield (Ky.).....20
Cannelton.....18	Owensville.....18
Cannelton.....14	Tell City.....33

SUMMARY

Won.....	2
Lost.....	5
Tied.....	1
Total Points—130	Opponents' Points—209

"Their Homage We Pay"



First Row: Gordon May, Joe Paulin, Bobby Miller, Hargis Hafele, Buddy Bennett.
Second Row: Freddie Franzman, Billy Guillaum, Harold Franzman, Coach Hubert Scott, Edward Dixon, Billy Aldridge.

SEASON RECORD			
Cannelton.....	23	Grandview.....	22
Cannelton.....	20	Rockport.....	4
Cannelton.....	21	Tell City.....	24
Cannelton (overtime).....	27	Chrisney.....	25
Cannelton.....	19	Ben Davis.....	33
Cannelton.....	21	Rockport.....	13
Cannelton.....	14	Petersburg.....	31
Cannelton.....	16	Dale.....	30
Cannelton.....	24	Troy.....	19
Cannelton.....	27	Daviess Co. (Ky.).....	23
Cannelton.....	26	Troy.....	27
Cannelton.....	22	Tell City.....	21
Cannelton.....	19	Corydon.....	17
Cannelton.....	32	Hawesville.....	15
Cannelton.....	23	Owensboro.....	41
Cannelton.....	22	Boonville.....	29
Cannelton.....	47	Hawesville.....	15
Cannelton.....	28	Dale.....	26

Won, 11—Lost, 9

Total Points, 431 Opponents' Points, 415

NEW YEAR TOURNEY

Cannelton.....	13	Dale.....	17
Cannelton.....	15	Boonville.....	24

SECTIONAL TOURNEY

Cannelton.....	24	Troy.....	14
Cannelton.....	31	Rockport.....	13
Cannelton.....	24	Tell City.....	23
Cannelton.....	22	Dale.....	20

Yea, Black!



DORIS

Bullpups



First Row: Arthur Young, Alwyn Thomas, Harold Daum, Lee Frank Sapp, Charles Sweeney.

Second Row: Harold Glenn, Hargis Hafele, Harmon Voyles, George Hufnagel, Charles Vogt, Gordon May.

Third Row: Ernest Schwartz, Joseph Lynch, Charles Franzman, Wilfred Board.

SEASON RECORD

Cannelton.....19	Grandview.....10
Cannelton.....22	Rockport.....10
Cannelton.....13	Tell City..... 9
Cannelton.....17	Chrisney.....19
Cannelton.....23	Rockport.....15
Cannelton..... 9	Dale.....20
Cannelton.....26	Troy..... 5
Cannelton.....11	Daviess Co. (Ky.).....18
Cannelton..... 9	Troy.....11
Cannelton.....11	Tell City.....21
Cannelton.....24	Hawesville.....12
Cannelton (overtime).....16	Boonville.....14
Cannelton..... 7	Hawesville.....12
Cannelton.....12	Dale.....14

SUMMARY

Won..... 7
 Lost..... 7

Total Points, 219

Opponents' Points, 190

Junior High

SEASON RECORD

Cannelton.....26	Chrisney..... 3
Cannelton.....10	Dale..... 4
Cannelton..... 3	Troy.....10
Cannelton.....27	Corydon..... 5
Cannelton.....22	Boonville.....16
Cannelton.....13	Dale..... 9
Cannelton.....15	St. Paul.....14

SUMMARY

Won.....	5
Lost.....	6
Points.....	101
Opponents.....	47

First Row: Junior Evans, Charles Schneider, Raymond Gunn, Paris Johnson.
Second Row: Lee Allen Pyle, Ralph Dixon, Coach Clifford Swift, Floyd Gunn, Bill May.



Baseball Team, Spring 1939



First Row: Bobby Miller, Gilbert Harper, Harry Lee Huber, Buddy Bennett.
Second Row: Joe Paulin, McKinley Roberts, Billy Aldridge, Edward Cash, Harold Fuchs.
Third Row: Edward Dixon, Coach Foster Park, Wilfred Board.

1939 BASEBALL SCORES

Cannelton.....	0	Boonville.....	3
Cannelton.....	2	Huntingburg.....	0
Cannelton.....	1	Tell City.....	3
Cannelton.....	0	Boonville.....	9
Cannelton.....	0	Tell City.....	3
Cannelton.....	9	Huntingburg.....	1
Cannelton.....	3	Owensboro Sr. Hi.....	2

SUMMARY

Won.....	3
Lost.....	4
Total Points, 15	Opponents' Points, 21

PARTIAL 1940 SCHEDULE

(With results up to the time the *Notlennac* went to press)

Cannelton.....	3	Daviess Co. (Ky.).....	12
Cannelton.....	1	Huntingburg.....	7
Cannelton.....	5	Bosse (Evansville).....	13
Cannelton.....	8	Boonville.....	3
May 6 Boonville.....		Here
May 10 Huntingburg.....		There
May 13 Daviess Co. (Ky.).....		Here



F E A T U R E S

High School Band



First Row: Freddie Franzman, Harold Franzman, Wilfred Board, Edward Dixon, Virginia Ramsey, Dorris Gibbs, Oscar Dixon, Dorothy Jean Wilber, Evelyn Stamp, Gladys June Minto, Imogene Skinner, Doris Hodde.

Second Row: Homer Groves, Marjorie May, Norma Lee Ungerecht, Rose Marie Dunn, Wilma Maier, Margaret Truempy, Arlene Park, Emma Lou Wagner, Alice Livers, Beverly Livers, Richard Rausch.

Third Row: Jeanette Crook, Dale Zellers, Russell Clements, Harold Truempy, Alfred Wilber, William Powers, Jacob Patmore, Paul Ungerecht, Denny Ramsey, Shirley Pekingpaugh, Joy Scull, Marge McFall, Zella Tinsley.

Fourth Row: Jack Sprinkle, William McFarling, Harold Daum, George Connor, Wayne Pekingpaugh, Kenneth Crook, Delvern McFall, Buddy Hafele, Floyd Gunn.

Fifth Row: Don Marketto, Director, Otto Zellers, Curtis Dhonau, Homer Clement.

Ready For Concert



High School Chorus



First Row: Emma Lou Wagner, Marge McFall, Harold Daum, Dale Zellers, Norma Lee Ungerecht, Virginia Ramsey, Jeanette Paulin.

Second Row: William McFarling, Harold Truempy, Russell Clements, Rachelle Swihart, Beatrice Couch, Theola Gerber, Dorris Gibbs.

Third Row: William Powers, Otto Zellers, Marjorie May, Margaret Truempy, Beverly Livers, Virginia Lehman, Alice Livers.

Fourth Row: Wilfred Board, Homer Groves, Harold Franzman, George Connor, Freddie Franzman, Wayne Pekinpaugh.

Members not on picture: Doris Hodde, Wilma Maier, Russell Jarboe.

Popular Orchestra



C. H. S. Club Life



HOME ECONOMICS



BOY SCOUTS



ARTS AND CRAFT



PHOTOGRAPHY



CHEERLEADERS

HI-Y

G. A. A.





LIBRARIANS



CHECKER



DRAMATICS



CHEFS



SCIENCE



MODEL AIRPLANE



SPORTS

Varied and Active

The Hi-Life



Upper right—Marjorie May, Editor, Sec-
ond Semester. Upper left—Kenneth Crook,
Assistant Editor, Second Semester. Lower
left—Virginia Ramsey, Assistant Editor,
First Semester. Lower right—Bill Guil-
laum, Editor, First Semester.

Hi-Life Cites Purposes

Paper Has Large Exchange

Dedicated to the best inter-
ests of Cannelton High
School, the Hi-Life is
published for the purpose
of fostering school spirit,
promoting better under-
standing and upholding
the school traditions and
standards.

It not only aids in the
formation of student
opinion but is an organ of
information and amuse-
ment for everyone in the
community. Many adults
are among the subscribers,
and the exchange list in-
cludes schools from Alas-
ka to Honolulu.

1940 Marks Twelfth Year of Publication

Since 1928 the high
school has published a
newspaper. At present,
the Hi-Life, a member of
the N. S. P. A. and the I.
H. S. P. A., is edited bi-
weekly by the Journalism
department, under the di-
rection of Miss Beck.

HI-LIFE STAFF AT WORK!





Thespian Troupe No. 255

Once a Thespian, Always a Thespian

Organized in 1934, Thespian Troupe No. 255 of the National Thespian Society has always been an active organization in Cannelton High School.

The present Troupe of nine members is under the direction of Miss Mildred Rush.

Requirements for high school membership include active work in dramatics plus a required number of roles in major plays and convocation programs.



'39 Graduates



SENIOR CLASS OF 1939

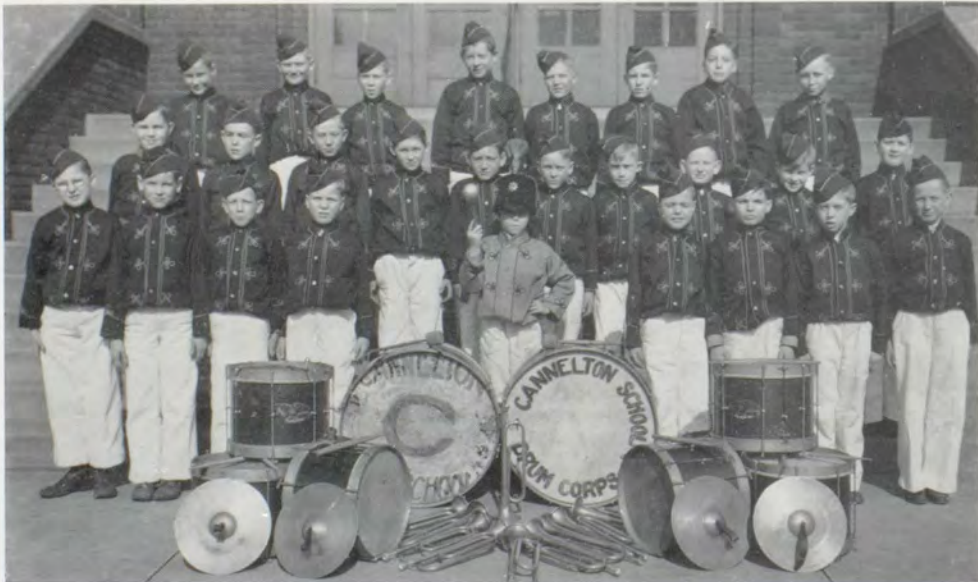
First Row: Elsie Johnson, Roy Yoho, Nina Harper, Margaret Groely, Hazel May, Jane Hafele, Leona Boyle.

Second Row: Betty Hall, Leona Daum, Robert Richey, Ruth Genet, Thurman Young, Lloyd Sims, Essie Lee Glenn.

Third Row: Agnes Cronin, Martha Ramsey, Naomi Ruth Tinsley, Charles Scheidegger, Alfred Wagner, Edwin Hufnagel, Margie Trainer.

Fourth Row: Bert Mason Jr., Conway Craft, Ralph Daum, Clifford Gunn, Grace Heck, Ruth Gruver, James Polk.

Myers' Drum Corps









Weather
or
Whether?





Patrons' Page

These friends of the school purchased a NOTLENNAC at one dollar, thereby aiding in the staff's effort to make the book available to students at fifty cents:

Malcolm Porter
William Scheidegger
Dr. P. J. Feder
Margaret Harding
Franzman's Grocery
Don Marketto
William Waldschmidt
Het's Place
Dr. H. C. Richardson
Dale H. Braun
A. C. Little
Homer Smallwood
Mabel Damm
Theodore Sprinkle
Joe Minor
Edward Hemphill
Prentice Harper
Walter Franzman
Dr. Hargis Bush
Waymond Morgan
Luther Waddy
Norman Hafele
Lee Taylor
Rev. F. Fahrenkamp
Carrie Hess
Charles U. Clark
Mildred Rush

Bill Birchler
Dorothy Suddarth
Fred J. Evrard
W. H. Marchal
Ivo Huber
James Polk
John Minto
Evelyn Busam
Vella Young
Irvin Ramsey
Dorothy May
Pearl Hafele
Julia Franzman
Fcster Park
Margaret Fuchs
Sidney K. Groves
Burns Wittmer
Mary Lou Beck
Clifford Swift
Virginia Cullen
R. W. Imel
Harry Davidson
Glenward Hafele
Paul Carr
John Conway
Jacob Seibert
Hubert Scott

The Staff and Student Body wish to thank those who are advertising in this year's NOTLENNAC. Without their cooperation, it would have been impossible to have the yearbook.

PLEASE PATRONIZE OUR ADVERTISERS

CANNELTON
SEWER
PIPE
COMPANY
•

LEHMAN
Youngster
FUN'iture

America's Largest Juvenile
Furniture Manufacturers

LEHMAN COMPANY
OF AMERICA

OVERLOOKING THE BEAUTIFUL OHIO RIVER



SUNLIGHT
HOTEL

CANNELTON . . . INDIANA

C. C. Gilliatt, Manager

TAP ROOM — CLUB ROOM — BOWLING — BILLIARDS

CONGRATULATIONS CLASS OF '40
C. H. S.

Tell City Furniture Company

CONGRATULATIONS CLASS OF '40

Always Remember the Best
is Cheapest

We Invite and Appreciate Your
Patronage

Cheerio Beauty Shop

Phone 757

Cannelton, Ind.

BEST WISHES
TO THE CLASS OF '40

Frank E. Huber

Tasty Sandwiches and Soft Drinks

Phone 764

Cannelton, Ind.

IT'S FORD
for '40!

Werner Motor Company

Largest Stock of Good Used Cars
Perry County's Oldest
Dealers

Malone's Garage

DODGE PLYMOUTH
PACKARD

Phone 844W

Cannelton, Ind.

GRADUATION SUITS

We Shall Be Pleased to Show You All
Models and Patterns

Styled Right and Priced Right

Cassidy Bros. & Vititoe

The Exclusive Men's and Boys' Store

Tell City, Indiana

First Cannelton National Bank

Member Federal Reserve System and
Federal Deposit Insurance Corporation

Deposits Up to \$5,000 Insured
for Individual, Firm or Corporation

Resources Over \$1,000,000.00

Preston Minor

INSURANCE

Cannelton National Bank
Building

Phone 786

CANNELTON, INDIANA

THE CANNELTON TELEPHONE

The Only Newspaper Published at the County Seat
Cannelton, Indiana

“A NEWSY NEWSPAPER”

A First Class Job Department in Connection

“We wish to thank the students for their pa-
tronage throughout the school year . . . and
will appreciate your business in the future.”

We are completing our lines of summer things to wear,
and invite you to see them.

ROSENBLATT'S

Telephone 823

Cannelton, Indiana

Schreiber's Drug Store

The REXALL Store

Everything a Good Drug Store
Should Have

Tell City

Indiana

C O N G R A T U L A T I O N S

CLASS OF '40

"Where the Lads and Lassies Dance"

Silver Anchor

Ed. Genet

Proprietor

Freeman's Grocery

M E A T S — V E G E T A B L E S
N O T I O N S

Phone 829

Cannelton, Ind.

SHIP VIA

A & H Truck Line, Inc.

Daily Service to

Louisville, Ky. Evansville, Ind.

Phone J-A-4261

Phone 3-4461

Dauby Motor Co.

CHEVROLET and BUICK Service

Phones 284 - 285

Tell City, Indiana

Gerber Oil Co.

S H E L L P R O D U C T S

Cannelton, Indiana

C O L D S T O R A G E

I C E

D A I R Y P R O D U C T S

TELL CITY CREAMERY CO.

Superior
ICE CREAM

TELL CITY, INDIANA

W. J. Gerber, Inc.

FURNITURE
and
UNDERTAKING

Phone 745

Cannelton, Indiana

Roland's Jewelry Store

EXPERT WATCH AND JEWELRY
REPAIRING FOR OVER 50 YEARS

A Gift from Roland's Will
Always Be Remembered

CANNELTON, INDIANA

DRUGS : TOILETRIES : SUNDRIES

Prescriptions a Specialty

We Invite and Appreciate Your
Patronage

Snyder Drugs

PHONE 849

Henry Heck & Co.

"The Home of Friendly Service"

WE ARE READY TO
SERVE YOU

TELEPHONE 740

Schmuck's Market

GROCERIES
MEATS
VEGETABLES

Phone 735

Cannelton, Indiana

A POPULAR EXPRESSION . . .

"What You Buy from Hecks
Gives Service"

August Heck & Co.

Cannelton's Leading Store
Beautiful Chinaware Given Away

Absolutely FREE!

Bill's Place

A Good Place to Eat and Drink

We Try to Please!

Phone 701

McGinnis Shell Service

"The Home of Service"

GAS — OIL — LUBRICATION

On Highway 66

Cannelton, Ind.

Heinzle's Jewelry Store

Tell City, Indiana

Let Us Solve
Your Gift Problems

Congratulations Class of '40

"Candy is Delicious Food
Enjoy Some Every Day"

Ben Franklin Store

Cannelton, Indiana

Congratulations Seniors

Citizens National Bank

Tell City, Ind.

"Our Service Makes Friends"

The Sugar Bowl

"WHERE FRIENDS MEET"

Complete
Fountain Service
Magazine and News Stand

A. J. Birchler

Tell City, Ind.

Wear Friedman Shelby
All-Leather Shoes

SHOES
FOR THE ENTIRE FAMILY

Bruggenschmidts

Tell City's Leading Department Store

Cannelton Supply Company

Dealers in
Hardware and Supplies

Phone 785

Tom Mullen, Jr., Prop.

Dauby's Department Store

Complete Shopping Center

"Where Friends Meet and Trade"

Tell City, Ind.

William Tell Studios

"Somebody Wants Your Photograph"

R. G. LEONARD, Manager
627½ Main Street Over A & P Store
Tell City, Indiana

Congratulations Class of '40

H. W. Truempy

GROCERIES AND VEGETABLES

Phone 732

Cannelton, Indiana

The Irvin Theatre

“Reel Entertainment”

CANNELTON, INDIANA

When in

Need of Chairs

Think of . . .

TELL CITY

Tell City Chair Company

BEST WISHES

TO THE CLASS OF '40

From

**Tell City
Coca Cola Bottling Co.**

Phone 25

Tell City, Indiana

H and C Ferry

Short Route to Louisville and Owensboro

Twenty-four Hour Service

