

The
Mollenhac
ne

1
9
3
9

The Notlennac
of 1939

JANE HAFELE
Editor-in-Chief

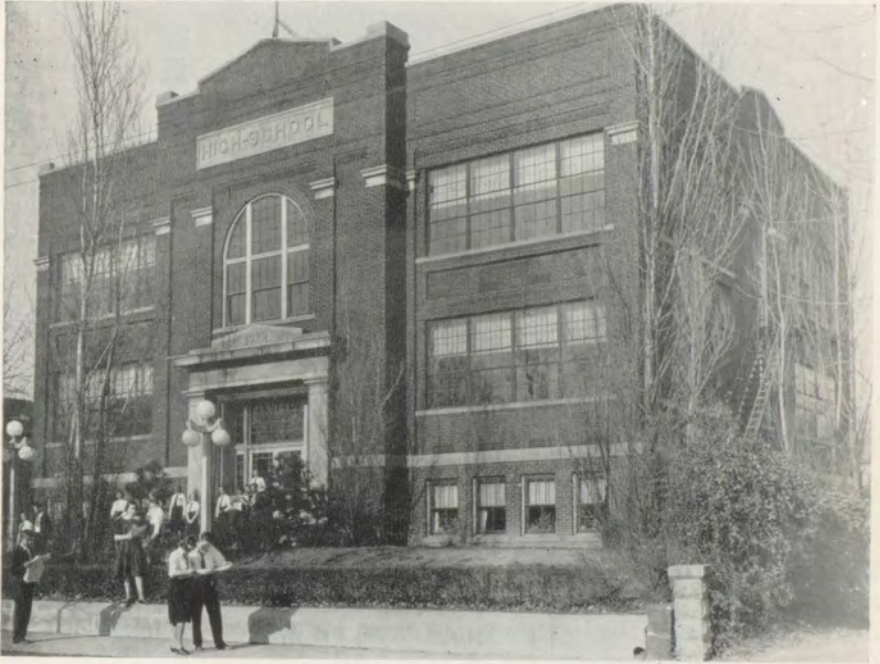
RALPH DAUM
Business Manager

Published by
THE 1939 SENIOR CLASS
Cannelton High School

Photography by
THE BURKDOLL STUDIOS
Cannelton, Indiana

THE WILLIAM TELL STUDIOS
Tell City, Indiana

Printing by
THE TWIN CITY PRINTING CO.
Champaign, Illinois



D E D I C A T I O N

WE, THE MEMBERS OF THE CLASS OF 1939, HAVE BEEN FOR THE PAST FOUR YEARS, UNDER THE PATERNAL GUIDANCE OF OUR SUPERINTENDENT, HARRY R. DAVIDSON. HE HAS ENTERED INTO THE HEARTS OF THE STUDENTS BY HIS SINCERE AND UNSELFISH SERVICE WHICH HE HAS RENDERED DURING THE EIGHT YEARS OF HIS SUPERINTENDENCY.

AS A TOKEN OF OUR APPRECIATION OF HIS PERSEVERANCE AND LOYALTY WE GRATEFULLY DEDICATE THIS VOLUME OF THE NOTLENNAC TO HIM.





WILLIAM C. LEHMAN
President



PRESTON MINOR
Secretary



EDWARD MCGINNIS
Treasurer

SCHOOL TRUSTEES



HARRY DAVIDSON
Superintendent

A.B. Indiana Central College 1928
M.S. Indiana University 1937



DALE H. BRAUN
Principal
B.S. Indiana University 1935
M.S. Indiana University 1938



MIRIAM STONE
Sponsor
B.S. Central
Normal College 1934

FACULTY

NORMAN LEWELLYN

Industrial Arts

B.S. Indiana State Teachers 1934

DON MARKETTO

Music

B.S. Indiana State Teachers 1925

M.S. Syracuse University 1937



SIDNEY GROVES

Science and Mathematics

B.S. Purdue University 1937

MABEL DAMM

Home Economics

B.S. Indiana State Teachers 1923



MILDRED RUSH

Art and English

B.S. Ball State Teachers 1938

CLIFFORD SWIFT

*Physical Education and Social
Studies*

B.S. Butler 1937



ANDREW LITTLE

Foreign Language and English

A.B. Indiana University 1915

THEODORE SPRINKLE

Social Studies

A.B. Central Normal 1924



SCHOOL CALENDAR

1938-1939

September

- 6—Opening of School
- 13—Island Queen Excursion
- 23—Lyceum Number—"Spooks and Frauds"

October

- 6—Movies, "Oliver Twist"
- 27-28—State Teachers' Association
- 31—Lyceum Number—"Briggs and Brown"
Annual Hallowe'en Party

November

- 11—Armistice Program
Afternoon Holiday
- 7-12—American Education Week
- 24-25—Thanksgiving Holidays

December

- 6—Lyceum Number—"Mississippi Jubilee Singers"
- 12—Father McShane, "Illustrated Lecture on Holy Land"
- 22—Christmas Holidays Begin

January

- 2—Christmas Holidays End
- 11—Lyceum Number—"Corporal Bob Ingleston"
- 13—Movies, "Showboat"
- 23—New Semester Begins

February

- 3—Movies, "So Red the Rose"
- 7-14—Flood Vacation
- 21—Lyceum Number—"C. Thomas Magrum"

March

- 2-3-4—Sectional Basketball Tourney at Cannelton
- 17—Thespian Play, "Daddy Long-Legs"
- 22—Lyceum Number—"Tom Thumb Circus"

April

- 7—Spring Vacation
- 28—Annual Band Concert
- 21—Movies, "The Crusades"

May

- 2—Physical Education Exhibit
- 19—Senior Class Play
- 20—Junior-Senior Reception
- 21—Baccalaureate Services
- 25—Class Day Exercises; School Exhibit
- 26—Commencement Exercises

Classes



SENIORS

EDWIN HUFNAGEL, JR.—*Cookie*

Band 2-3-4; *Hi-Life* Staff 4; Vice-President 2; Hi-Y 3-4; Sports 1-2; Photography 2-3.

ANNA BESS HALL—*Betty*

Hi-Life Staff 4; Dramatic Club 3-4.

MARGARET GROELY—*Groely*

Band 1-2-3-4; Orchestra 1-2-3-4; Advertising Manager Annual 4; Glee Club 1-2; Honor Roll 4; Office Girl 4.

CLIFFORD GUNN—*Chrissy*

Band 1-2-3-4; Basketball 3; *Hi-Life* Staff 4; Hi-Y 3-4; Sports Editor Annual 4; Sports 2-3.

BERT MASON, JR.—*Junior*

Basketball 3-4; Baseball 4; Football 4; Hi-Y Club 3-4; Reporter *Hi-Life* 4; Sports Club 1-2-3-4.

GRACE HECK—*Gracie*

Band 1-2-3-4; Orchestra 3-4; Annual Staff 4; Girl Reserves 1-2; Art Club 3; Office Girl 4.

JANE HAFELE—*Janer*

Editor-in-Chief *Hi-Life* 4; Editor Annual 4; Class President 1-2-3-4; Dramatics 1-2-3-4; Rifle Club 2.

JAMES POLK—*Jim*

Basketball 3; Football 4; Hi-Y Club 3; Sports 1-2-3-4.

SENIORS

RUTH GENET—*Ruthie*

Hi-Life Staff 4; Snapshot Editor for Annual 4; Girl Reserves 1-2; Dramatics 2-3-4; Librarians 4; Vice-President of Class 1.

ALFRED WAGNER—*Hammer*

Reporter *Hi-Life* 4; Tumbling 1-2; Chef Club 2; Dramatics 3-4.

ROY YOHO—*Yoohoo*

Baseball 2-3-4; Athletics 4; Science 4; Checker Club 2; Librarians 4; Vice-President of Class 3-4.

ELSIE JOHNSON—*Iggie*

Band 2-3-4; Orchestra 4; Feature Editor Annual Staff 4; Dramatics 4; Honor Roll 1-3-4; Office Girl 3-4.

HAZEL MAY—*Midge*

Dramatics 3-4; Girl Reserves 2; Home Economics 1; Rifle Club 2.

RALPH OSCAR DAUM—*Deba*

Business Manager Annual Staff 4; Photography Club 3-4; Dramatics 3-4; Operator of School Movie Projector 3-4.

THURMAN YOUNG—*Wimpy*

Assistant Sports Editor *Hi-Life* 4; Sports Club 2; Checker Club 1-4; Athletics Club 3; Dramatics Club 4; Boy Scouts 3.

NAOMI RUTH TINSLEY—*Nomie*

Band 1-2-3-4; Orchestra 1-2-3-4; Home Economics Club 2; Paper Flower Club 1; Librarians 3-4.



SENIORS



ESSIE LEE GLENN—*Squeaky*
Orchestra 1-2-3-4; Honor Roll 3-4; Li-
brarians Club 3-4.

FRANK ODELL—*Sunny*
Science Club 4.



LEONA BOYLE—*Katy*
Librarians Club 3-4; Honor Roll 1-2-
3-4; Paper Flower Club 1.

NINA HARPER—*Ducky*
Paper Flower Club 1; Dramatics
Club 3-4; Librarians Club 4.



LLOYD SIMS—*Happy*
Basketball 1-2-3-4; Baseball 1-2-3-4;
Reporter *Hi-Life* Staff 4; Science 1-2;
Hi-Y Club 2; Sports Club 1-2-3.

MARJORIE TRAINER—*Margie*
Hi-Life Staff 4; Girl Reserves 1-2;
Dramatics Club 3-4; Librarians 3.



RUTH GRUVER—*Johnnie*
Honor Roll 4; Librarians Club 4; Paper
Flower Club 1.

AGNES CRONIN—*Red*
Reporter *Hi-Life* Staff 4.

SENIORS

MARTHA RAMSEY—*Mattie*

Band 2-3-4; Orchestra 3-4; Associate Editor *Hi-Life* Staff 4; Sales Manager Annual Staff 4; Dramatics 1-2-3-4.



CHARLES SCHEIDEGGER—*Chottie*

Reporter *Hi-Life* Staff 4; Checker Club 2-3-4; Tumbling 1-2; Athletics Club 3; Rifle Club 2.

ROBERT RICHEY—*Bob*

Hi-Life Staff 4; Checker 2-4; Science Club 3-4; Chef Club 3; Rifle Club 2.



CONWAY CRAFT—*Crafty*

Harmonica Club 1-2-3.

LEONA DAUM—*Daumie*

Paper Flower Club 1; Home Economics Club 2.



CLASS OFFICERS

JANE HAFELE	<i>President</i>
ROY YOHO	<i>Vice-President</i>
ELSIE JOHNSON	<i>Secretary-Treasurer</i>



JUNIOR CLASS

First Row: Thomas Hay, James Rosier, Virginia Ramsey, Ida Schurtter, Earl Tate, Opal Hawkins.

Second Row: John L. Clark, Otho Hicks, Edna Champion, Kathleen Trainer, Kenneth Crook, Jessie Wagner, Athlene Nugent.

Third Row: Charles Hanks, Katherine Jellison, Jean Armstrong, LaVera Young, Doris Gibbs, Beverly Livers.

Fourth Row: William Guillaum, Charles Keiser, Mary Popp, Wanda Badger, Harold Fuchs, Virginia Lehman, Edward Cash.

Fifth Row: Billy Heck, Vernon Peckinpaugh, Margaret Truempy, Marjorie May, Floyd Hermann, McKinley Roberts.

Sixth Row: George Connor, Robert Stillwell, Junior Gruver, Wayne Peckinpaugh, Juanita Glenn.

Seventh Row: Robert Schwartz, Homer Clement, Hugh Freeman, Edward Dixon, Dortha Findley, Nelson Hills.

Not in picture: Billy Aldridge, Margie Cullen, Harold Franzman.

CLASS OFFICERS

EDWARD DIXON	<i>President</i>
BILLY ALDRIDGE	<i>Vice-President</i>
NELSON HILLS	<i>Secretary-Treasurer</i>



SOPHOMORE CLASS

First Row: Casper Hayden, Maurice Reed, Kathleen Thomas, Eileen Thomas, Agnes Thiry, Theola Gerber, Clifford Stamp, Bobby Miller, George Richey.

Second Row: James Clemens, Dorothy Jones, Ida Mae Plock, Violet Davis, Alta Ruth Hall, Wanda Lee Bolin, Ella Louise Fuchs, Dale Harris.

Third Row: Mary Spencer, Georgia Lee Hemphill, Anna Eva Julkenbeck, Rachelle Swihart, Marjorie Bolin, Mary Owen, Jessie Little.

Fourth Row: Walter Hargis, Doris Hodde, William Bennett, Russell Jarboe, Hester Allen, Georgia Lee Scull, Jean Fuchs, Helen Jean Hargis.

Fifth Row: Clarence Hall, Harry Lee Huber, Shirley Pekinpaugh, Charles Franzman, Delvern McFall, Wilfred Board, Ralph Bolin, Buddy Hafele.

Sixth Row: Kenneth Ahl, Homer Groves, Joe Odell, Joe Lynch, Joe Paulin, Michael Fishback, William Sims.

Not in picture: Freddie Franzman, Opal Peckenpaugh, Orville Peckenpaugh, Warren Ramsey.

CLASS OFFICERS

DORIS HODDE	<i>President</i>
JOE PAULIN	<i>Vice-President</i>
MAURICE REED	<i>Secretary and Treasurer</i>



FRESHMAN CLASS

First Row: Winchell Harris, Billy VanHoosier, Thomas Adams, Marge McFall, June Thomas, Esther McMains, Wanda Damron, Jack Hay, John Egnew.

Second Row: Paul Ungrecht, William McFarling, Martha Jean May, Sarah Jean Aldridge, Eva Lee Sodrel, Lucille Coyle, Gladys Adams, Wilma Young.

Third Row: Russell Clements, Edward Henning, Tom May, Joy Scull, Eleanor Keiser, Amy Hargis, Bobby Heck, Carolyn Doughty.

Fourth Row: Earl Hurst, Gilbert Harper, Hazel VanHoosier, Zella Tinsley, Minnie Marie Anson, Thelma Burton, Lucille Cordrey, Lillian Glenn.

Fifth Row: John McKenzie, William Clements, Glenward Fuchs, Margaret Jarboe, Lee Beumel, Owen Allen, Robert McLain.

Sixth Row: Ethel Joe Bruner, Wilma Maier, Alice Livers, Nelda Heffner, Minnie Marie Schraner, Kenneth Tate.

Seventh Row: Junior Leaf, Ralph Sims, George Hufnagel, James Popp, Kenneth Young, G. E. Buebenzer, Lathrop Reid.

Not in picture: Clarence Alvey, Junior Hargis, Anna Bell Horsley, Clara Schmidt, Houston Tindle, Emma Lou Wagner, Otto Zellers.

CLASS OFFICERS

SARAH JEAN ALDRIDGE *President*
 GILBERT HARPER *Vice-President*
 WINCHELL HARRIS *Secretary and Treasurer*



EIGHTH GRADE

First Row: Robert Stamp, Alfred Wilber, Ruth Futter, Mary Richey, Dorothy Firestone, Billie Plock, Denney Ramsey.

Second Row: Harold Daum, Thelma Parr, Nannie Snyder, Gordon May, Ruth Hall, Billie Allen, Curtis Dhonau.

Third Row: Hargis Hafele, Dale Zellers, Arlene Park, Helen Thorn, Willa Mae Winchell, Norma Lee Ungerecht.

Fourth Row: Virginia Wilson, Claude Browder, Harold Glenn, Nettie Davis, Harmon Voyles, Jeanette Crook.

Fifth Row: Leota Mosby, James Pruitt, Carl Bosley, Larry Connor.

Not in picture: Curtis Hale, Gladys Huffine, Verlee May, Marie Northener, Alwyn Thomas, Harold Truempy.



SEVENTH GRADE

First Row: Bobby Powers, Harold Thomas, Nadine Kincaid, Evelyn Stamp, Frances Firestone, Gladys June Minto, Bobby Perry, Edgar Connor.

Second Row: Maurice Yaggi, Oscar Dixon, Paris Johnson, Opal Nugent, Mabel Dixon, Pauline Morris, Jack Sprinkle, Aubrey Hawkins.

Third Row: Arthur Burns, Mildred Bolin, Imogene Skinner, Mabel Ruth Powell, Iva Irene Bolin, Mary Ida Robson, Wilma Heck.

Fourth Row: Ralph Dixon, Charles W. Clark, Walter Browder, Hazel Thorn, Bobby Roland, Floyd Gunn, Verna Gunn, Cora Freeman.

Fifth Row: Mildred Frakes, Raymond Gunn, William Powers, Mary Louise Livey, Viola Bolin.

Not in picture: Doyle Johnson, Elizabeth McFall, Charles Underhill, Helen Yoho.



MYERS' GRADE SCHOOL

- Upper left:* First Grade, Julia Franzman, teacher.
Upper right: Second Grade, Pearl Hafele, teacher.
Middle left: Third Grade, Dorothy May, teacher.
Middle right: Fourth Grade, Irvin Ramsey, teacher.
Lower left: Fifth Grade, Margaret Farquhar, teacher.
Lower right: Sixth Grade, Foster Park, teacher and principal.

Athletics





FIRST FOOTBALL TEAM IN THE HISTORY OF CANNELTON

Sitting: Curtis Dhonau, Student Manager; Gilbert Harper, Lathrop Reid, Harry Huber, Buddy Hafele, Joe Paulin, Tom May, Clarence Alvey, Denny Ramsey, Student Manager.

Standing: Clifford Swift, Coach; Billy Aldridge, Robert Stilwell, Edward Dixon, Robert Schwartz, McKinley Roberts, James Polk, Bert Mason, Jr., Junior Hargis, Norman Lewellyn, Assistant Coach.

SEASON RECORD

Cannelton	31	Rockport	21
Cannelton	21	Tell City	18
Cannelton	26	Dale	38
Cannelton	14	Owensville	49
Cannelton	32	Mt. Vernon	18
Cannelton	18	Tell City	16
Cannelton	53	Winslow	20

SUMMARY

	Won 5		Lost 2
Points	195	Opponents	180



BULLDOGS

Front Row: Tom May, Joe Paulin, Jr., Clifford Swift, Coach: McKinley Roberts, Bobby Miller.

Back Row: Ralph Sims, Junior Gruver, Bert Mason, Jr., Edward Dixon, Billy Guillaum, Lloyd Sims, Edward Cash, Student Manager.

SEASON RECORD

Cannelton	44	Grandview	8
Cannelton	18	Rockport	14
Cannelton	15	Tell City	26
Cannelton	21	Chrisney	31
Cannelton	26	Ben Davis	29
Cannelton	35	Rockport	25
Cannelton	28	Dale	29
Cannelton	16	Troy	12
Cannelton	14	Daviess Co. Hi.	31
Cannelton	27	Memorial	35
Cannelton	19	Hawesville	9
Cannelton	27	Troy	25
Cannelton	10	Huntingburg	45
Cannelton	22	Tell City	19
Cannelton	16	Princeton	24
Cannelton	17	Corydon	38
Cannelton	21	Owensboro	23
Cannelton	16	Boonville	15
Cannelton	20	Dale	29

SECTIONAL TOURNEY

Cannelton	25	Gentryville	6
Cannelton	25	Chrisney	23
Cannelton	19	Dale	21

SUMMARY

Points	Won 10	481	Opponents	Lost 12	653
------------------	--------	-----	---------------------	---------	-----



BULLPUPS

First Row: Clifford Swift, Coach; Joe Lynch, Clarence Alvey, William Bennett, Buddy Hafele.

Second Row: James Clemens, Student Manager; Lee Beumel, Wilferd Board, Delvern McFall, William Sims, George Hufnagel, Gilbert Harper.

SEASON RECORD

Cannelton	32	Grandview	3
Cannelton	18	Rockport	7
Cannelton	15	Tell City	29
Cannelton	23	Chrisney	14
Cannelton	28	Rockport	8
Cannelton	15	Dale	17
Cannelton	20	Troy	15
Cannelton	24	Daviess Co. Hi	6
Cannelton	7	Memorial	39
Cannelton	9	Hawesville	7
Cannelton	22	Troy	8
Cannelton	18	Huntingburg	19
Cannelton	14	Tell City	17
Cannelton	5	Princeton	21
Cannelton	13	Owensboro	30
Cannelton	9	Boonville	19
Cannelton	17	Dale	15

SUMMARY

	Won 9		Lost 8
Points	289	Opponents	276



JUNIOR HIGH TEAM

First Row: Curtis Dhonau, Student Manager; Harold Glenn, Raymond Gunn, Harold Daum, Gordon May, Jack Sprinkle, Student Manager.

Second Row: Hargis Hafele, Larry Connor, Norman Lewellyn, Coach; Harmon Voyles, Floyd Gunn.

SEASON RECORD

Cannelton	12	St. Michael	13
Cannelton	21	Newman	13
Cannelton	32	Dale	8
Cannelton	19	Consolidated	9
Cannelton	20	Newman	13
Cannelton	21	St. Paul	13
Cannelton	18	Troy	11
Cannelton	13	St. Michael	22
Cannelton	13	Corydon	19
Cannelton	7	Boonville	20
Cannelton	26	Dale	21
Cannelton	13	Newman	8
Cannelton	12	Troy	13
Cannelton	16	St. Paul	13

JUNIOR HIGH TOURNEY

Cannelton	23	St. Michael	9
Cannelton	21	Newman	11
Cannelton	10	St. Paul	18

SUMMARY

Points	297	Opponents	234
Won 11		Lost 6	



1938 BASEBALL TEAM

First Row: Walter Wittmer, Gordon May, Charles Gerber.

Second Row: Lloyd Sims, Carroll Hawhee, Russell Sims, Raymond Clement, Roy Yoho, William Glenn.

Third Row: Harry Huber, Delvern McFall, McKinley Roberts, Edward May, Joe Paulin, Jr., William Aldridge, Robert Miller, Coach Swift.

1938 SPRING RESULTS

Cannelton	4	Huntingburg	4
Cannelton	6	Tell City	5
Cannelton	21	Daviess Co. Hi.	3
Cannelton	3	Owensboro	5
Cannelton	3	Huntingburg	5
Cannelton	5	Jasper	13
Cannelton	4	Tell City	3
Cannelton	2	Daviess Co. Hi	6
Cannelton	2	Jasper	4

SUMMARY

Won 3

Lost 5

Tied 1

Runs 50

Opponents 48

Activities





HIGH SCHOOL BAND

First Row: Don Marketto, Director; Wilferd Board, Margaret Truempy, Doris Gibbs, Elsie Johnson, Virginia Ramsey, Joy Scull, June Minto, Imogene Skinner, Wilma Maier, Naomi Tinsley, Marge McFall, Doris Hodde, Drum Major.

Second Row: Georgia Lee Scull, Martha Ramsey, Nelson Hills, Virginia Lehman, Beverly Livers, Emma Lou Wagner, Alice Livers, Harold Franzman, Edward Dixon.

Third Row: Shirley Peckinpaugh, Margaret Groely, Grace Heck, Russell Clements, William Powers, Alfred Wilber, Jeanette Crook, Homer Groves, Marjorie May.

Fourth Row: Harold Daum, Wayne Peckinpaugh, George Connor, Kenneth Crook, Buddy Hafele, Clifford Gunn.

Fifth Row: Delvern McFall, William McFarling, Homer Clements, Otto Zellers, Edwin Hufnagel.



READY FOR CONCERT



HIGH SCHOOL ORCHESTRA

First Row: Beverly Livers, Alice Livers, Martha Ramsey, Doris Hodde, Georgia Lee Scull, Elsie Johnson, Margaret Truempy, Harold Franzman, Naomi Ruth Tinsley.

Second Row: Margaret Groely, Grace Heck, Marjorie May, Essie Lee Glenn, Homer Clements, Delvern McFall.

Third Row: Russell Clements, George Connor, Wayne Peckinpough, Don Marketto, Director.



POPULAR ORCHESTRA



HIGH SCHOOL CHORUS

First Row: Georgia Lee Scull, Rachelle Swihart, Thomas Adams, Winchell Harris, George Richey, Emma Lou Wagner, Marge McFall, Don Marketto, Director.

Second Row: Russell Clements, William Clements, James Rosier, Maurice Reed, Paul Ungrechtt, Doris Hodde, Wilma Maier.

Third Row: Alice Livers, Lathrop Reid, Russell Jarboe, Earl Hurst, Joe Lynch, Bobby Miller, Otto Zellers, Clarence Alvey.



Don Marketto
Director

MUSIC DEPARTMENT

The band, orchestra, instrumental classes and vocal classes make up the musical department of our school. The band under the direction of Don Marketto has been chosen district champion of Class C bands for six consecutive years.

Over one-half of the entire student body participates in the musical department. This department is publicized more than any other one in the school. The reason for the popularity of the band is that it comes in contact with the citizens by playing for public gatherings and entertainments. We pay homage to Mr. Marketto for the time he has spent improving and building these fine organizations.



EDITORIAL STAFF OF THE NOTLENNAC

RALPH DAUM, *Business Manager*

JANE HAFELE, *Editor-in-Chief*

ELSIE JOHNSON, *Feature Editor*

MARGARET GROELY, *Advertising Manager*

GRACE HECK, *Typist*

RUTH GENET, *Snap-shot Editor*

MARTHA RAMSEY, *Sales Manager*

CLIFFORD GUNN, *Sports Editor*



ATHLETIC CLUB



DRAMATICS CLUB



HOME ECONOMICS CLUB



G.A.A. CLUB



LIBRARIANS CLUB



AIRPLANE CLUB



HI-Y CLUB



CHEFS CLUB



SCIENCE CLUB



CHECKER CLUB



CRAFT CLUB



BOY SCOUTS



JANE HAFELE
Editor



MARTHA RAMSEY
Assistant Editor

HI-LIFE

Our School Publication

The *Hi-Life*, our school newspaper, is published bi-weekly by the members of the Journalism class. Many names of our alumni and the townspeople are listed among the subscribers; but the paper is given free of charge to the student body and faculty. The exchange editor sends each issue to schools in almost every state in the Union and to one in Alaska.

The *Hi-Life* holds a first class honor rating as given by the National Scholastic Press Association. Mildred Rush acts as faculty advisor.



MAKING UP THE *HI-LIFE*



THESPIAN CLUB—TROUPE NO. 255

First Row: Miss Mildred Rush, Rachele Swihart, Doris Hodde, Ruth Genet, Martha Ramsey.

Second Row: Ralph Daum, Harold Franzman, Harry Baker.



MILDRED RUSH
Director



"DADDY LONG-LEGS"



CLASS OF '38

First Row: Edith Irvin, Frank Huber, Jr., Helen Bosley, Virginia Lynch, Thelma Polk, Harry Baker, Mary Harris, Edward May, Mildred Fore, Sponsor.

Second Row: Virginia Patmore, Doris Minto, Gladys Young, Hazel Chappelle, Geneva Leonard, Mildred Little, Charles Gerber, Jr., Margaret Harding, Ray Egnew, Evelyn Pontrich.

Third Row: Walter Wittmer, Melvin Rosier, Dura Lee Gibbs, Russell Busam, Frances Glenn, Russell Sims, Earl Smith, Lydia Hanks, Louise Riley.

Fourth Row: Ruth May, Marieta Paulin, Alexander Tinsley, Ralph Fuchs, Jane Frizzell, Carroll Hawbee, Claude Heck, Raymond Clements.



SENIOR CLASS PLAY—1938
The Patsy



JUNIOR-SENIOR RECEPTION
MAY 1938



ON PARADE



MYERS' DRUM CORPS



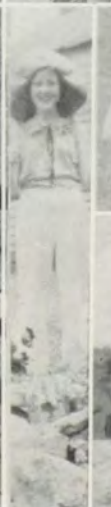
Here 'n There



This 'n That



Crumbs 'n Crackers



Dots 'n Dashes



Block That Kick



You 'n Me

PATRONS' PAGE

These friends of the school purchased a Notlennac at one dollar, thereby aiding in the staff's effort to make the book available to students at fifty cents:

Irvin Ramsey	Mabel Damm
Dorothy May	Andrew Little
Pearl Hafele	Mildred Rush
Joe Minor	Norman Lewellyn
Virginia Cullen	Sidney Groves
Homer Smallwood	Theodore Sprinkle
Walter Franzman	Lily Groely
James Polk	Harry Davidson
Ernest Weatherholt	Dale Braun
Julia Franzman	Don Marketto
Prentice Harper	Clifford Swift
Norman Hafele	Miriam Stone
Raymond Nichols	P. D. Augenstein
Vernon Clemens	Carl Knapp
William H. Waldschmidt	W. C. Lehman
Foster Parks	Paul Carr
Margaret Farquhar	Margaret Harding
Dr. Hargis Bush	Carroll Hawhee
Dr. H. R. Richardson	John Minto
Mrs. D. S. Connor	Carrie Hess
Fred Parrish	Mrs. Abe Roathman
Edward Hemphill	Albert Lehman, Jr.
Paul Gibbs	Albert Lehman, Sr.
Burns Wittmer	Frank Clemens
Dean Roper	Ivo Huber
William Scheidegger	Vella Young

LEHMAN
Youngster
FUN'iture

America's Largest
Juvenile Furniture Manufacturers

Lehman Company of America

Baby Guard Hi-Chairs and Cribs

First Cannelton National Bank

Member Federal Reserve System
and Federal Deposit Insurance Corporation

Deposits up to \$5,000 Insured for Individual, Firm or Corporation

Resources Over \$1,000,000.00

DRUGS - TOILETRIES - SUNDRIES
PRESCRIPTIONS A SPECIALTY

We Invite and Appreciate Your
Patronage

Snyder Drugs

Phone 849



**The Favorite
General Utility Cloth
Since 1849**

**Preston Minor
Insurance**

Cannelton National Bank
Building

Phone 786

●
CANNELTON, INDIANA

**CANNELTON
SEWER
PIPE
COMPANY**

Freeman's Grocery

MEATS - VEGETABLES
NOTIONS

Cannelton, Indiana

Phone 829

Jack's Service Station

STANDARD OIL PRODUCTS
BATTERIES

"Road Service"

Cannelton, Indiana

Phone 848

W. J. Gerber, Inc.

FURNITURE and UNDERTAKING

Cannelton, Indiana

Phone 745

Bill's Place

A Good Place to EAT and DRINK

WE TRY TO PLEASE!

WM. P. FUCHS, Prop.

Schmuck's Market

GROCERIES
MEATS
VEGETABLES

Cannelton, Indiana

Phone 735

J. H. Schaffer

Shoe Hospital

Cannelton, Indiana

HEARD THE LATEST?
SEE THE LATEST IN
SHOES and CLOTHING

- At -

MEADOR'S

"We Sell For Less"

Cannelton Supply Company

Dealers In
HARDWARE and SUPPLIES

Phone 785

TOM MULLEN, JR., Prop.

A POPULAR EXPRESSION—

“What You Buy From Hecks
Gives Service”

August Heck & Co.

Cannelton's Leading
Store

Beautiful Chinaware Given Away
Absolutely FREE!

“Most of the BEST
for the LEAST”

H. W. Truempy

Groceries
Meats
Vegetables

Cannelton, Ind.

Phone 732

THE QUEST FOR SCHOOL
SUPPLIES USUALLY ENDS AT

IRVIN'S

General Merchandise

Serving the Community Since 1861
Phone 773

Frank E. Huber

Tasty Sandwiches and
Cold Drinks

Corner Washington and Sixth Streets
Phone 764—Cannelton

Franzman's Market

Everything Good to Eat

Phone Us . . . We Deliver

**Roland's Jewelry
Store**

Expert Watch and Jewelry
Repairing for Over
50 Years.

A Gift from Roland's Will Always
Be Remembered.

CANNELTON, INDIANA

“We wish to thank the students for their pa-
tronage throughout the school year . . . and
will appreciate your business in the future.”

We are completing our lines of summer things to wear,
and invite you to see them.

ROSENBLATT'S

Cannelton : : : : Indiana
Telephone 823

McGinnis Shell Service

Specializing In
Gas - Oil - Lubrication

"The Home of Service"

On Highway 66 :-: Cannelton, Ind.

Daum Motor Company

EXPERT - Tel. 834-W - WELDING
COMPLETE AUTO SERVICE

Gerber Oil Co. SHELL PRODUCTS

Cannelton, Indiana

CONGRATULATIONS CLASS OF '39

"Candy is Delicious Food
Enjoy Some Every Day"

Ben Franklin Store Cannelton, Indiana

H. Heck and Company

"The Old Reliable"

WE ARE READY TO
SERVE YOU

Phone 740

The Irvin Theatre

ALWAYS—

Contributing Its Measure of
Happiness to Cannelton's
Community Life



Dutschke Milling Co.

Real
Barbecue
Sandwiches

Dine
Dance

SILVER ANCHOR ED. GENET

SATURDAY and SUNDAY
SPECIALS

BARBECUE RIBS and
BARBECUE MUTTON

Autographs



