

The
Muller
Inc

1937

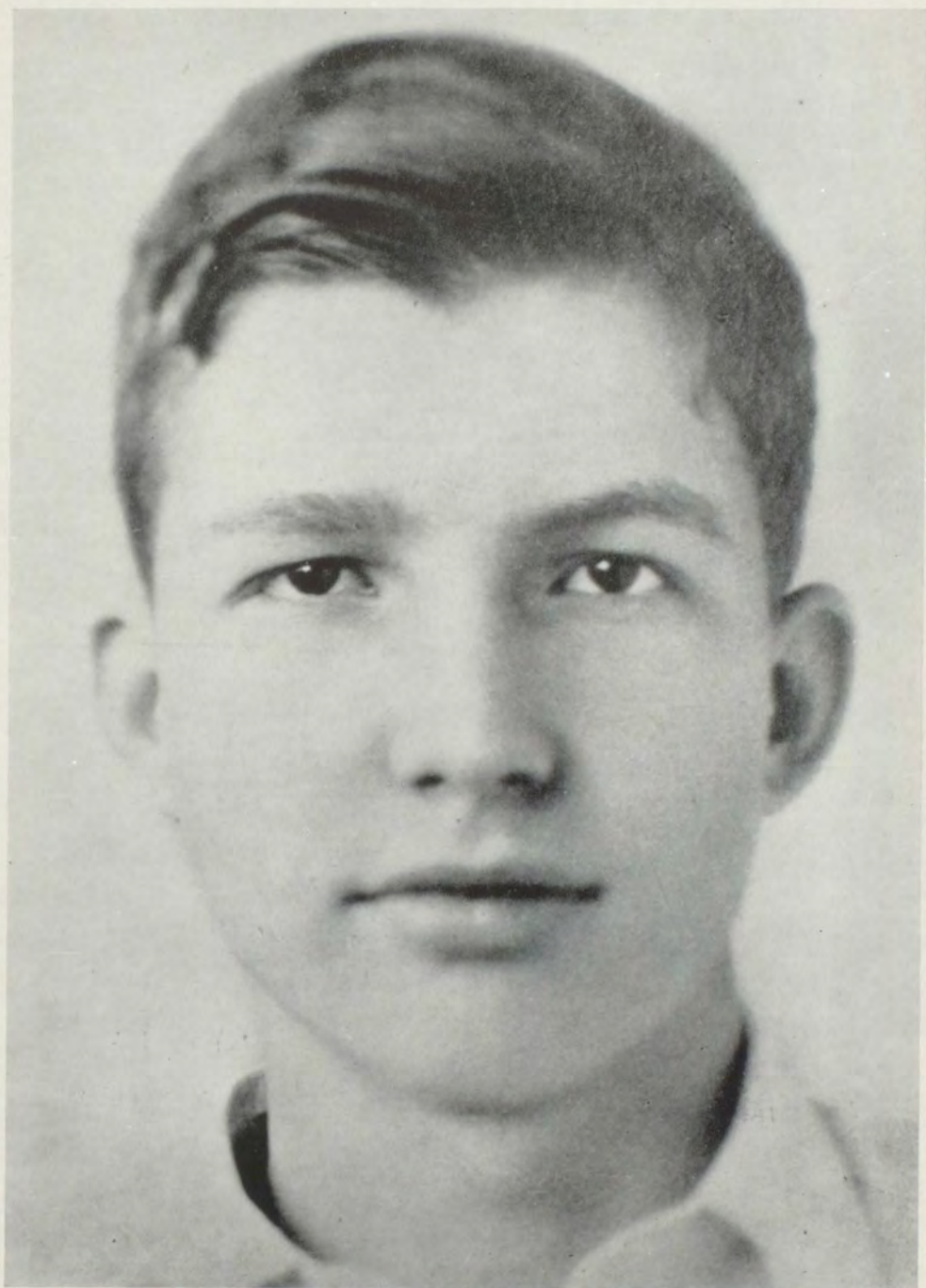


Published by

*The Class of Nineteen Hundred Thirty-seven
Cannelton High School
Cannelton, Indiana*

Dedication

This Nottlennac, the first year book in the history of our school, is respectfully dedicated to the memory of William C. Lehman, Jr. "Buster" was loved by his fellow students because he was a regular fellow.....



WILLIAM C. LEHMAN, JR.

Editorial Staff of the Notlennac



ALFRED CASPER
Business Manager



DORATHEA LEHMAN
Editor-in-Chief



MALCOLM NUGENT
Photographic Editor



EVELYN MAIER
Feature Editor



CHARLES LEITNER
Advertising Manager



MILDRED SPENCER
Snap-shot Editor



J. P. CONNOR
Class President



MARIANNA HARDING
Typist



OUR SCHOOL
A First Class Commission . . .

CANNELTON BOARD OF EDUCATION



WILLIAM C. LEHMAN
President
Eleventh Year



PRESTON MINOR
Secretary
Sixteenth Year



EDWARD MCGINNIS
Treasurer
Sixth Year



HARRY DAVIDSON
Our Superintendent

SUPERINTENDENT'S MESSAGE

When Michael Casper wrote an essay "Resolve Is What Makes Man Manliest" as his contribution to the graduation exercises for the first class of our commissioned high school in 1897, the year 1937 seemed very far in the future. Another forty years hence in the year 1977, the major portion of the lives of these students whose pictures you enjoy seeing, will be history rather than prophecy. It is the earnest desire of the administrative officials and the faculty that our conception of a secondary education program comprising four years of their high school life, will have such an influence in guiding them along the proper course that as they look back and appreciate these pictures, the intervening years will be made up of happy days, kind thoughts and good deeds.

Our Principal



PAUL C. GARRISON
Social Studies

Our Class Sponsor



MILDRED DROLLINGER
Commercial Subjects

HAROLD RICHERT
Industrial Arts

DON MARKETTO
Music



LEONARD HALL
Science and Mathematics

MILDRED FORE
Art and English



MABEL DAMM
Home Economics

ANDREW LITTLE
Foreign Language and English



THEODORE SPRINKLE
Social Studies

EDWARD CUDDY
Physical Education and Social
Studies



SCHOOL CALENDAR

September

8—Opening of school.

October

22-23—Vacation. State Teacher's Association.

30—Hallowe'en Party.

November

8-14—American Education Week.

9—School Play, "The Haunted House."

11—Armistice Day Program.

13—Opening of Basketball Season.

December

18—Annual Christmas Operetta.

18—Christmas Holidays begin.

January

4—Christmas vacation ends.

5-6—Donkey Basketball.

18—School closed due to flooded highways.

February

15—School opened after flood waters recede.

15—Semester examinations were cancelled, new semester begins.

March

4-5-6—Sectional Basketball Tourney at Cannelton.

26—Afternoon of Good Friday, holiday.

April

9—District Band Contest.

20—Annual Band Concert.

30—Annual Physical Education Exhibit.

May

1—State Band Contest.

14—Senior Class Play.

22—Junior-Senior Reception.

23—Baccalaureate Services.

25-26—Semester Tests.

26—Class Day Program.

27—Annual School Exhibit.

28—Forty-first Annual Commencement Exercises.



CLASSES



J. P. CONNOR—*Jay*

Class President 3-4; Band 1-2-3-4;
Basketball 1-2-3-4; Baseball 2-3-4;
Orchestra 2-3-4; Dramatics Club 3.

CLARA MARIE PAULIN—*Lefty*

Class Secretary 4; Paper Flower
Club 1-2-3; *Hi-Life* Staff 4.



EVELYN MAIER—*Evie*

Band 1-2-3-4; Class Treasurer 3-4;
Popular Orchestra 1-2-3-4; Orchestra
3-4; Girl Reserve 1; Editor-in-Chief
Hi-Life 4.

ROBERT SCHURTTER—*Bob*

Class Vice-President 4; Hi-Y 1;
Baseball 2; Softball 2; Sports
Club 2; Honor Roll 1-2-3-4;
Chemistry Assistant 4.



ROBERT BOYLE—*Bob*

Checker Club 2-4; Science Club 3;
Chefs Club 3; Photography Club 4.

ALMA BURTON—*Burtie*

Glee Club 1; Chorus 2.



ALFRED CASPER—*Rube*

Basketball 1-2-3-4; Baseball 1-2-3-4;
Dramatics Club 2-3; Sports Club 3-4;
Thespan Club 3-4; Stage Manager
2-3-4.

TILLIE DAUM—*Daumie*

Paper Flower Club 2-3; Home
Economics Club 3; Librarians
Club 4.

WANDA DAVIS—*Windy*

Band 3-4; Orchestra 3-4; Girl Reserve
2; Operetta 2; Chorus 1-2.

ELMER FRANZMAN, JR.—*Ken*

Hi-Y 2-4; Librarians Club 2-4;
Sports Editor *Hi-Life* 4; Cheer
Leader 2-3; President Chefs Club
4; Dramatics Club 1-2-3-4.



EDITH FRAKES—*Happy*

Paper Flower Club 4; Home Econom-
ics Club 3.

OSCAR FRANZMAN—*Os*

Basketball 2-3-4; Hi-Y 3-4;
Baseball 2; Sports Club 3-4;
Rifle Club 4.



JOHN FRIZZELL—*Frize*

Basketball 1; Baseball 2-3-4; Chefs
Club 3; Sports Club 3.

ANNA LOUISE DOUGHTY—*Annie*

Orchestra 3-4; Paper Flower Club
1-2.



MARIANNA HARDING—*Ann*

Orchestra 2-3-4; Librarians Club 4;
Honor Roll 1-2-4; Annual Staff 4;
Paper Flower Club 2-3; Glee Club 2-3.

JOSEPH GLENN—*Toar*

Band 3-4; Orchestra 4.





MARVIN GUNN—*Hershey*

Honor Roll 1-4; Science Club 3;
Photography Club 4.



MARY EULA HARGIS—*Hargie*

Operetta 2; Paper Flower Club
3; Glee Club 3; Librarians Club
4; Hobby Club 4.



KATHLEEN HENRICKSON—*Katy*

Cheer Leader 1; Dramatics Club 4;
Girl Reserve 2; Feature Editor *Hi-Life*
4; Operetta 1-2.



WILLIAM HARRIS—*Bill*

Hi-Y 4; Sports Club 4; Project
Club 2-3; Checker Club 2-3-4.



ROBERT C. HARRIS—*Bob*

Hi-Y 4; Sports Club 3; Rifle Club 4.



OLA JARBOE—*Odie*

Thespian Club; Librarians Club
2-3-4; Associate Editor *Hi-Life*
3; Dramatics Club 3.



DOROTHY IONE LAMB—*Lambie*

Home Economics Club 3; Paper Flower
Club 3-4.



JAMES HAWKINS—*Jimmie*

Tumbling Club 2-3-4; Cheer
Leader 2-3.

CHARLES HODDE—*Cotton*
Band 1-2-3-4; Hi-Y 3-4.



DORATHEA LEHMAN—*Dot*
Band 1-2-3-4; Editor Annual 4;
Honor Roll 1-2-3-4; Orchestra
3-4; Popular Orchestra 1-2-3-4.

VIOLET MCLAIN—*Vi*
Home Economics Club 3; Paper Flower
Club 4.



AUGUST KIESER—*Skeezix*
Checker Club 2-3-4.

CHARLES LEITNER—*Chic*
Basketball 1-2-3; Hi-Y Club 3-4;
Tumbling Club 2-3; Dramatics Club
4; Plays 2-3-4.



ARTHUR R. PAULIN—*Art*
Sports Editor *Hi-Life* 3; Hi-Y 1.

MALCOLM W. NUGENT—*Mac*
Hi-Y 3-4; *Hi-Life* Staff 4; Dramatics
Club 3-4; Annual Staff 4.



DAVID E. MCFARLING—*Barney*
Basketball 1-2-3-4; Thespian
Club; Dramatics Club 3-4; Hi-
Y 4.



CHARLES ROEHM—*Spot*

Band 1-2-3-4; Thespian Club; Popular Orchestra 2-3-4; Student Manager 1-2-3; Tumbling Club 2-3-4.



VIRGIE MAE SINCLAIR—*Virg*

Paper Flower Club 1-2-3-4.



MILDRED SPENCER—*Mil*

Annual Staff 4; Associate Editor *Hi-Life* 4; Dramatics Club 4.



KENNETH ROLAND—*Bacon*

Hi-Y 2-3-4; Sports Club 3; Rifle Club 4.



JESSE E. STITH—*Esse*

Hi-Y 2-3-4; Rifle Club 4; Science Club 3; Magicians Club 4.



RACHEL THIRY—*Ray*

Paper Flower Club 1-2-3-4; Hobby Club 4; Operetta 1-2.



KATHRYN YOUNG—*Kay*

Honor Roll 2; Home Economics Club 2-3.



LEROY WAGNER—*Wagner*

Hi-Y 3-4; Sports Club 3-4; Magicians Club 4.



First Row: Paul C. Garrison, sponsor; Hazel Chappelle, Carroll Hawhee, Mary Harris, Edith Irvin, Walter Wittmer, Gladys Young, Mildred Fore, sponsor.
Second Row: Frank Huber, Margaret Harding, Thelma Polk, Helen Bosley, Virginia Lynch, Mary Tscheulin, Evelyn Pontrich, Ralph Fuchs.
Third Row: Charles Gerber, Doris Minto, Mildred Little, Dura Lee Gibbs, Geneva Leonard, Virginia Patmore, Lydia Hanks.
Fourth Row: Ralph Roper, Russell Busam, Jane Frizzell, Ruth May, Marietta Paulin, Dorothy Suddarth.
Fifth Row: Russell Sims, Claude Heck, Edward May, Raymond Clements, Alexander Tinsley, Louise Riley, Earl Smith.
Juniors not on picture: Mary Agnes Bubenzer.

JUNIOR CLASS OFFICERS

President MARGARET HARDING
Vice-President EDITH IRVIN
Secretary and Treasurer MARY TSCHULIN



First Row: Thurman Young, Elsie Johnson, Charles Scheidegger, Hazel May, Robert Richey, Margaret Groely, Conway Craft, Nina Harper.

Second Row: William Glenn, Jane Hafele, Roy Yoho, Ruth Genet, Herman Plock, Dorothy Kinder, Ralph Daum.

Third Row: Edwin Hufnagel, Anna Bess Hall, Naomi Tinsley, Leona Boyle, Bert Mason, Mildred Gunn, Dorothy Adams, Mary M. Allen, Beth MacNeill, Ida Mae Trent, Essie Lee Glenn, Marjorie Trainer.

Fourth Row: Gordon Johnson, Lloyd Sims, Clifford Gunn, Grace Heck, Frank O'dell, Ruth Gruver, Leona Daum, James Polk.

Sophomores not on picture: Martha Ramsey.

SOPHOMORE CLASS OFFICERS

President JANE HAFELE
Vice-President EDWIN HUFNAGEL
Secretary and Treasurer CLIFFORD GUNN



First Row: Malcolm Lehman, Dorothy Hanselman, Kenneth Crook, Ida Schurtter, Jesse Keown, Juanita Glenn, Edward Cash, Charles Connor.
Second Row: Virginia Ramsey, George Connor, Margie Cullen, Charles Kieser, Anna^a L. Underhill, Dwight Anderson, Athlene Nugent, Robert Schwartz.
Third Row: Curtis Walker, Jean Armstrong, Billy Heck, Edna Champion, James Bolin, Leona Alvey, Cletus Maier.
Fourth Row: Harold Franzman, Doris Mae Gibbs, Earl Tate, Jessie Wagner, Edward Dixon, Anna Mae Schraner, Kathleen Trainer.
Fifth Row: Bill McFall, Wayne Peckinpaugh, Katherine Jellison, Otho Hicks, Harold Fuchs, Margaret Truempy, Robert Harding, Beverly Livers, Lavera Young, Mary Popp.
Sixth Row: William Guillaume, McKinley Roberts, Homer Clements, Marjorie May, Charles Hanks, Chester Smallwood, Junior Gruver, Mildred Thomas, Grace Weatherholt, Dorothy Mosby, Robert Stilwell, Hugh Freeman.
Freshmen not on picture: Willa Sue Ballman, Thomas Hay, Charles McLain, Mary Northenor, Lucille Plock, Vernon Peckinpaugh.

FRESHMAN CLASS OFFICERS

<i>President</i>	WILLIAM GUILLAUM
<i>Vice-President</i>	KENNETH CROOK
<i>Secretary and Treasurer</i>	EDWARD CASH



First Row: A. C. Little, sponsor; Ida Mae Plock, Russell Mason, Theola Gerber, George Richey, Winona Smith, Maurice Reed.
Second Row: Homer Groves, Mary Dedman, Clarence Hall, Mary Spencer, Ralph Yaggi, Rachel Swihart, Freddie Franzman, Buddy Hafele.
Third Row: Joseph Lynch, Dorothy Jones, Delvern McFall, Ella Mae Rollins, Violet Davis, Doris Hodde, Georgia Lee Scull, Helen Hargis.
Fourth Row: Russell Jarboe, William Sims, Wilfred Board, Charles Franzman, Opal Litherland, Georgia Lee Hemphill, Mitchell Spencer.
Eighth Grade Students not on picture: William Goodson, Bobby Miller.



First Row: Theodore Sprinkle, sponsor; John Egnew, Marge McFall, William Van Hoosier, Emma Lou Wagner, David Lehman, Amy Hargis, Paul Ungerecht, Wanda Damron, Winchell Harris, Carolyn Doughty.
Second Row: Martha May, William Gilbert, Esther McMains, Russell Clements, Thelma Parr, Edwyn Thomas, Joy Scull, Uriel Carter.
Third Row: Thomas Coiles, Alice Young, William Clements, Wilma Heck, William McFarling, Hazel Van Hoosier, Aubrey Huffine.
Fourth Row: Elenora Kieser, Larry Connor, Nelda Heffner, Nettie Davis, Dorothy Barker, Evelyn Elverd, Ethel Brunner, Wilma Maier.
Fifth Row: Forrest Bolin, George Plock, Eugene Thomas, Zella Tinsley, Alice Livers.
Seventh Grade Students not on picture: Lathrope Reid.



ATHLETICS



Sitting: Lloyd Sims, William Glenn, Edward May, Russell Sims.
Standing: Ralph Roper, St. Mgr.: Earl McFarling, Alfred Casper, J. P. Connor, Oscar Franzman, Edward Cuddy, Coach.

BULL DOGS SEASON RECORD

Cannelton	16	Lynnville	12
Cannelton	23	Troy	20
Cannelton	43	Rockport	16
Cannelton	30	Tell City	36
Cannelton	23	Mt. Vernon	26
Cannelton	24	Ben Davis	15
Cannelton	39	West Baden	14
Cannelton	23	Dale	27
Cannelton	22	St. Xavier	30
Cannelton	26	Reitz Memorial	31
Cannelton	32	Central City	35
Cannelton	35	Owensboro	24
Cannelton	35	Owensville	33
Cannelton	21	Petersburg	34
Cannelton	20	Corydon	23
Cannelton	32	Troy	19
Cannelton	28	Tell City	27
Cannelton	22	Boonville	29
Cannelton	26	Dale	27

SECTIONAL

Cannelton	31	Marengo	30
-----------------	----	---------------	----

SEMI-FINALS

Cannelton	18	Tell City	20
-----------------	----	-----------------	----

SUMMARY

<i>Won 10</i>	<i>Lost 11</i>
Points	569
Opponents	520



Sitting: Charles Gerber, Walter Wittmer, Carroll Hawhee, Alexander Tinsley.
 Standing: Ralph Roper, St. Mgr.; Lloyd Sims, Bert Mason, Clifford Gunn, James Polk, Edward Cuddy, Coach.

BULL PUPS SEASON RECORD

Cannelton	16	Tell City	17
Cannelton	25	Troy	17
Cannelton	30	Rockport	9
Cannelton	22	Tell City	17
Cannelton	19	Mt. Vernon	10
Cannelton	21	West Baden	14
Cannelton	18	Dale	32
Cannelton	24	Tell City	31
Cannelton	26	Petersburg	11
Cannelton	14	Corydon	27
Cannelton	17	Troy	28
Cannelton	17	Boonville	19
Cannelton	17	Dale	14

SUMMARY

	<i>Won 6</i>		<i>Lost 7</i>
Points	269	Opponents	246



Sitting: Buddy Hafele, Freddie Franzman, Bobby Miller, William McFarling, Mitchell Spencer.
Standing: Wilfred Board, Leo Goodson, Russell Jarboe, Leonard Hall, Coach.

JUNIOR HIGH TEAM

SEASON RECORD

Junior High	9	Newman	13
Junior High	9	Newman	12
Junior High	14	St. Paul	34
Junior High	10	St. Paul	20
Junior High	15	Consolidated	23
Junior High	19	Dale	6
Junior High	8	Troy	18
Junior High	27	St. Michael	7
Junior High	23	St. Michael	10
Junior High	39	Oil Township	15

COUNTY TOURNEY

Junior High	21	St. Michael	8
Junior High	16	Consolidated	15

FINALS

Junior High	21	Newman	24
-------------------	----	--------------	----



First Row: John Frizzell, Walter Wittmer, Carroll Hawhee, William Glenn, James Hawkins.
Second Row: Raymond Clements, Robert Schurtter, Russell Sims, Edward Cuddy, Coach: Charles Gerber, Edward May, Alfred Casper.

BASEBALL TEAM

SPRING SCHEDULE

- | | |
|---------|--------------------------|
| April 6 | Troy at Cannelton |
| 9 | Cannelton at Boonville |
| 13 | Huntingburg at Cannelton |
| 16 | Cannelton at Troy |
| 20 | Tell City at Cannelton |
| 27 | Boonville at Cannelton |
| 30 | Cannelton at Huntingburg |
| | |
| May 4 | Troy at Cannelton |
| 7 | Cannelton at Tell City |
| 11 | Owensboro at Cannelton |
| 20 | Cannelton at Owensboro |



"Our Athletic Field"



Rachel And Doris



"Our Gymnasium"



FEATURES



First Row: Malcolm Lehman, Charles Roehm, Martha Ramsey, Virginia Ramsey, Elsie Johnson, Margaret Truempy, Margaret Harding, Dura Lee Gibbs, Naomi Tinsley, Raymond Clements, Don Marketto, Director.

Second Row: Harold Franzman, Edward Dixon, Evelyn Maier, Carroll Hawhee, Ruth May.

Third Row: Alice Mae Young, Mary Tscheulin, Marjorie May, Wanda Davis, Edith Irvin, Virginia Lehman, Doratha Lehman, Doris Hodde, J. P. Connor, Margaret Groely, Russell Clements, Grace Heck, Beverly Livers, Clifford Gunn, George Connor, David Lehman, Charles Hodde.

Fourth Row: Homer Clements, Joe Glenn.

BAND

The band, organized in 1925, is our most nearly professional organization. It plays for all athletic contests, convocation programs and social programs at the school. On the Fourth of July, Labor Day, Armistice Day, and Decoration Day you will always see them on parade. In fact, any time the community calls they willingly respond. They have been on the air several times.

During the presidential election, just past, the band played for both major parties on several occasions. Their trips for this work took them to Evansville, Tell City and Hawesville. They were paid well.

The organization is the district champion Class C band. They have enjoyed this honor for three consecutive years. They participate in the state contest and always win honors in some department. Don Marketto is the director and is very popular among his students.



HIGH SCHOOL ORCHESTRA

Don Marketto, director; Essie Lee Glenn, piano; Dorathea Lehman, bassoon; Geneva Leonard, violin; Eleanor Kieser, violin; Georgia Lee Hemphill, violin; Alexander Tinsley, violin; Carroll Hawhee, clarinet; Homer Clement, sousaphone; Marianna Harding, violin; Anna Louise Doughty, violin; Evelyn Maier, clarinet; Margaret Harding, clarinet; Malcolm Lehman, clarinet; Dura Lee Gibbs, oboe; Naomi Tinsley, flute; Ruth May, flute; J. P. Connor, cornet; Margaret Groely, cornet; Wanda Davis, French horn; Marjorie May, French horn; Mary Tscheulin, French horn; Doris Hodde, bass clarinet; Joe Glenn, trombone; George Connor, drums; Raymond Clement, drums; Charles Roehm, the lyre.

Just as the band always appears for athletic contests, parades and civic functions, the orchestra plays for baccalaureate services, school plays and other activities of a more formal nature. This group was organized in 1935 and is rapidly assuming a position of importance in our school music department.



POPULAR ORCHESTRA
and they are very popular too . . .



PIANO CLASS
Group instruction as a regular subject . . .



Front Row: Mildred Fore, sponsor; Ola Jarboe, Virginia Patmore, Margaret Harding.
Second Row: Charles Roehm, Earl McFarling, Alfred Casper.

NATIONAL THESPIAN SOCIETY

The National Thespian Society established the local Troupe No. 255 on January 1st, 1934, in honor of our fine dramatic department. The charter members were Etta Belle Gabbert, Warney Litherland, Irene Ellison, Dean Roper, Virginia Cullen, Ruth Gibbs, Paul MacNeill, Marie Weatherholt, and Jacob Wittmer.

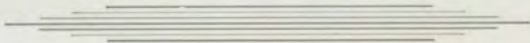
Selection of individual members is based on meritorious participation in dramatics. George Weigel and Robert Mitchner are former sponsors.



CHEFS CLUB



RIFLE CLUB



HARMONICA BOYS



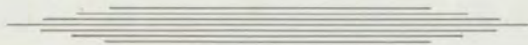
LIBRARIANS



SPORTS CLUB



HI-Y



GIRLS ATHLETIC ASSOCIATION



PHOTOGRAPHY CLUB



MILDRED SPENCER
Co-Editor

HI-LIFE
Our Bi-Weekly Newspaper

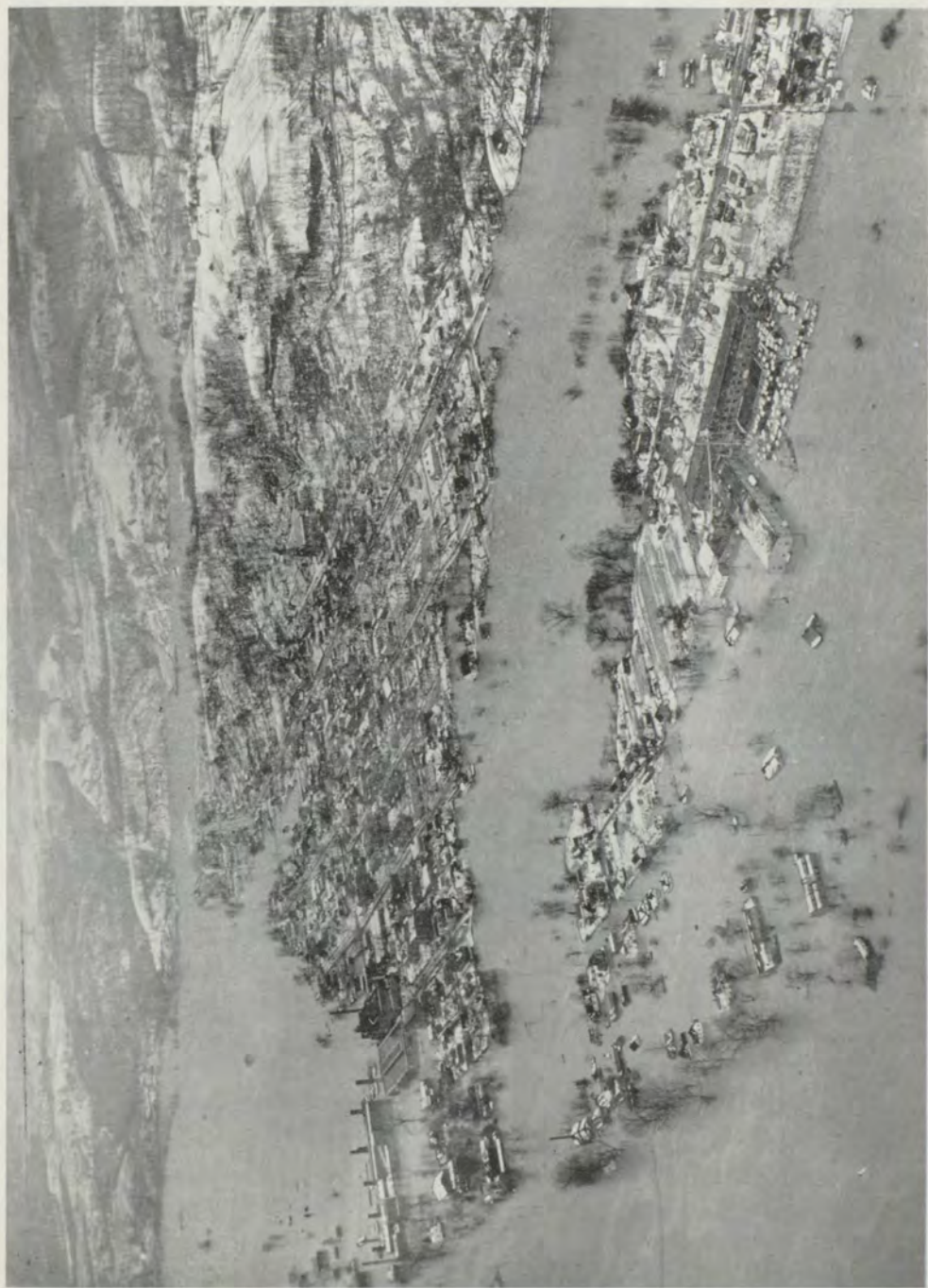


EVELYN MAIER
Co-Editor

The Hi-Life is distributed to the students every two weeks. It not only aids in the formation of student opinion but is an organ of information and amusement for everyone in the community. Many adults are among the subscribers and the exchange list includes schools in Alaska, Mexico and almost every state in the Union. It carries a *first class honor rating* as given by The National Scholastic Press Association. Mildred Fore is sponsor of the department.

THE STAFF AT WORK





A BIRD'S EYE VIEW OF THE GREAT FLOOD OF '37



Lehman Co. Of America



Southern Station



Gerber's Tanks



Indiana Cotton Mills



Coast Guard At Wilbur's Farm



Sewer Pipe Office



Mozart Hall



Sewer Pipe Kilns



Sunlight Hotel



Hubby's Place



Baptist Church



Third And Washington Streets



Athletic Field



Rodman Residence



St. Louis Avenue



Washington Street



Naomi R.



Cupid



Pride of Rome





Chase me



Homer



Rube



J. P.



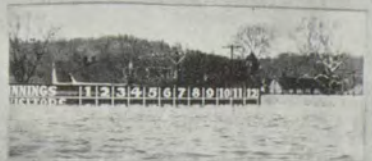
Little Joe



Innocence



Spring is Here





CLASS OF 1916

Front Row: Maurice Arnold,
Second Row: Blanche I. Clark,
 Stella Conway, August
 Rosenbaum, John Irvin,
 Paul Elder.
Third Row: George Bently,
 Ethel Denny, May Young.



GERMAN CLASS IN 1908

Front Row: Ruby Alvey, Pearl
 Hafele, Lydia Hunsche,
 Amy Turner.
Second Row: Eva Casper, Irene
 Hodde, Kathryn Lamy,
 Margherita Welling, teacher
 (Mrs. Lee Rodman).
Back Row: Otto Schlemmer,
 Norman Schlemmer, Frank
 May, Paul Lehman, Jr.



HOME ECONOMICS CLASS
 1923

Agnes Cullen, Betty Barker,
 Kathleen Hayes, Ruth Wil-
 bur, Wanda Bellville, Cle-
 meth Schutz, Floretta
 Denny, Martha Franzman,
 Verna Schaefer, Kathryn
 Hawhee, Mary Leon Polk,
 Regina Schutz, Evelyn
 Hanzelman, Louise Clark.

CLASS OF 1911

Front Row: Ora Rausch, Andrew Little, Chas. Hufnagel, Hugh May, Katie Wagner.

Second Row: Lilian Birlenbach, Naomi Turner, Alla Lamb, Mabel Damm, Gertrude Smith, Golda Simmons.



CLASS OF 1912

Front Row: Verna Mitchell, Edna May, Mary Hemphill, Ethel Rank, teacher; Naomi Simmons, Lula Hargis, Anna Dyer, G. N. Logan, principal.

Second Row: F. F. Hostetter, superintendent; Wilhelmina Lehman, Jessie May, Maurice Hyde, Charles Gardner, Preston Minor, Ruperta Tinsley, Ruth Culey.



CLASS OF 1913

Front Row: Mamie Wittmer, Margaret Irvin, Mabel Sloan, Mary Minto, Thekla Conway, Lorena Schmuck.

Second Row: F. F. Hostetter, superintendent; John Bentley, Charles Casper, Harry Minor, Martin Casper, G. N. Logan, principal.

Back Row: Ethel Rank, teacher.



Cannelton Commissioned High School

Superintendents

George Perry Weedman	1897
O. P. Robinson	1898-1902
J. F. Organ	1902-1903
C. A. Underwehr	1904-1906
Hardin Whitmarsh	1905-1911
F. F. Hostetter	1911-1917
J. Edwin Howe	1917-1922
A. C. Little	1923-1931
Harry Davidson	1931-

Principals

S. H. Bohn	1897-1900
C. A. Underwehr	1900-1904
A. J. Roehm	1904-1905
F. F. Hostetter	1905-1911
G. N. Logan	1911-1915
Wm. Conrad	1915-1916
Edwin Kahl	1915-1916
Harry Johnson	1916-1917
Elfa McCain Smith	1917-1919
A. C. Little	1919-1923
Mabel Damm	1923-1934
Paul C. Garrison	1934-

Alumni

1897
 FIRST CLASS
 Class Motto:
*"Not Finished
 But Begun"*
 Curtis J. Richey
 Cyrus M. Worrall
 Clara L. Dwyer
 John R. May
 Michael Casper
 Deliah J. Turner
 Arena Hunsche
 Olive Kendley

1898
 Cottie Diener
 Earl Snyder
 Byrd Henning

1900
 Ada Clark
 William Dwyer
 Fred Hemphill
 George Hufnagel

1903
 Maggie Blake
 Jennie Layman
 Anita Ladd
 Isabel Rial

1904
 James A. Casper
 William Casper
 Herbert Patrick
 Anna Haering

1905
 Hattie Sheldon
 Edith Rinkle

Ellen Dwyer
 Carl Heim
 Elsie Land

1906
 Arthur Cummings
 Maude Marshall
 Earl Royal
 Ida Turner
 May Royal
 Anton Wegener
 Edward Hemphill
 Ada Royal

1907
 Maurice Latimer
 Lelia Johnson
 Anna May
 Joseph Casper
 Crutcher Shallcross
 Lillian Steinsberger

1908
 Lydia Hunsche
 Norman Schlemmer
 Otto Schlemmer
 Amy Turner
 Josepha Meinecke

1909
 Pearl Hafele
 Eva Casper
 Irene Hodde
 Paul Lehman
 Frank May

1910
 Lola May
 Roy Mason
 Nellie Deweese
 Charles Schlemmer
 Olga Meinecke

Raymond Morris
Eugene Mitchell

1911

Mabel Damm
Alla Lamb
A. C. Little
Hugh May
Lillian Birlenbach
Ora Rausch
Golda Simmons
Gertrude Smith
Naomi Turner
Katie Wegener

1912

Lula Hargis
Anna Dyer
Mary Emma Hemphill
Wilhelmina Lehmann
Edna May
Jessie May
Preston Minor
Verna Mitchell
Ruth Culley
Naomi Simmons
Maurice Hyde
Rupert Tinsley
Charles Gardner

1913

John M. Bentley
Charles Casper
Thekla Conway
Margaret Irvin
Harry Minor
Lorena Schmuck
Mabel Sloane
Mamie Wittmer

1914

Hargis Bush
Irene Casper
Edith Hufnagle
William Lehman
Orval Leaf
Roger Casper

1915

Louise Heck
Jesse Hemphill
Hazel Mason
Myrtle Mason
Edward Clemens
Edward Hufnagle
Charles Stich
Carl Hucceby

1916

Maurice Arnold
George Bentley
Blanche I. Clark
Stella Conway
Ethel Denny

Paul Elder
Augusta Rosenbaum
May Young
Zoa Kellems
John A. Irvin

1917

Myrtle Casper
Alfred Clemens
Arthur Hostetter
Elizabeth Moog
Carson Young
Marguerite Bush

1918

Francis Busam
Gertrude Casper
Marie Cullen
Ernest Mason
Doris Minor
Nellie Robinson
Eva Shallcross
Orville Young
Lee Young

1919

Worseley Boyce
Agnes Hostetter
Leola Pohl
Casper Anderson

1920

Agatha Clemens
William Conway
Vernon Hafele
Erwin Rau
Russell Young
William Gerber
Gregory Busam

1921

Mildred Damm
Winonah Hafele
Lolita Hafele
Ruth Mullen
Edmund Rinkle
Mary L. Sapp
Clinton Whitted
Caramae Simons
Estyl Sheldon

1922

Edna Becker
Francis Casper
John Conway
Dorothy Cullen
Margaret Farquhar
Mary Farquhar
Genevieve Farquhar
Ida Mae Klein
Vernice Lattimer
Arthur Lehman
Calvert Lincoln
Grace Mason
Albert Plock

Charles H. Schurtter
Floyd Northenor
Eugene Powell
Margaret Anderson

1923

Camille Bradley
Charles Clark
Velva Carter
Norman Franzman
Pendleton Jones
Everett Knights
Charles Lynch
Harold Mullen
Mae Rinkle
Floretta Snyder
Lucille Steinsberger

1924

Myrtle Vogel
William Lincoln
Albert Lehman
Albert Gerber
Ella Mae McMahon
Juanita Sobrig
Edna Franzman
Mary Barker
Nellie Allen
Lillian Lueckel
Floretta Vogel
Vivian Mason

1925

Floretta Denny
Martha Franzman
Mamie Lueckel
Verna Schaefer
Clemeth Schultz
Regina Schutz
Ruth Wilbur

1926

Martin Heck
Eva Heck
Irma Hafele
Leoda Cullen
Lucile Clemens
Merle Lincoln
Harry Steinsberger
Addison Sprinkle
Calvin Harding

1927

Louis Walls
Charles Poehlein
Forrest Lincoln
Arthur Hodde
Dwight Hanselman
Mary Carr
Mildred Burton

1928

Frank Clemens
Louise Busam
William Waldschmidt

Percy Schutz
Charles McGinnis
Dwight Mullen
Jessie Lueckel
Robert R. Groves
Mildred Frizzell
Roberta Doughty
Helen Cullen

1929

Anna H. Maier
Lois Henrickson
Clara Robinson
Antoinette McGinnis
Joseph Minor
Lee Huber
Erma Heck
Arthur Gerber
Esther Franzman
Avis Carr
Bennie Bolin
Milton Heck

1930

Robert Ligon
Robert Cummings
Edna Truempy
Eva Marie Quick
Gladys Lynch
Ralph Irvin

1931

Margaret Schwartz
Jessie Roper
Willard Walls
Oressa Page
Edna Mae Dixon
Robert Hafele
Dorothy Bellville
Evelyn Busam
Anna Louise Roland
Helen Jones
Mary Eva Doughty
Edward Fulkerson
James Mullen
Charles U. Clark
Earl Danhauer
Walter Irvin
Forrest Wagner
Carl Danhauer
Joseph Lasher
Lee Connor
Emmet Lasher
James Hemphill
Lillian Clark

1932

Wilma Hodde
Julia Franzman
Elsie Sinclair
Thelma Roehm
Leona Poehlein
Hazel Fuchs
Verna Sinclair

Vernon Clemens
Lucile Raney
Donald Swoverland
Irvin Hall
Maurice Mason
Huberta Heck
Uleva Seibert
Paul Carr
Mildred Hollaway
Robert Robinson
Russel Wagner
William Doughty
George Kays
Bennett Peckinpaugh
Irene McFall
Horace Jackson

1933

Mary Lloyd Irvin
Dorothy Cummings
Ruth Harris
Kathryn Heck
Helen O'Dell
Julietta Voges
Leola Doughty
Elizabeth Patterson
Dorothy Lahee
Raymond Schurtter
Sidney Hall

1934

Leota Guillaume
Pascal Gabbert
Virginia Connor
Mildred Ramsey
Albert Trent
Dorothy May
Edith Bolin
Ralph Hafele
William Parrish
James Harper
Charles Fuchs
Alice Collings
Warney Litherland
William Kendall
Hazel Nix
Edith Dixon
Coleman Kays
Irene Clements

1935

Pauline Hyde
Mary O'Dell
Virginia Roehm
Edna Schwartz
Alice Crawford
Mildred Popp
Virginia Cullen
Marjoe Gardner
Naomi Bryant
Albert Harding
Roy Daum
William Holloway
Earl Doughty
Irvin Ramsey
Mary Lou Clements

LaVancha Lyell
Paul Gibbs
Forrest Hawkins
Milburn Hafele
Raphael Gelarden
Fay Adams
Eva McFall
Charles Genet
French Gaynor
Allen Groves
Edison Glenn
Eloise Weatherholt
Jack Huber
Virginia Roland
James West
Harry Glenn
Elmer Dhonau
Charlene Gerber
Edward Dhonau
Robert Polk

1936

Dorothy Fuchs
Harry Heck
Mary M. Dutschke
Lula Gerber
Virgil Carter
William Smith
Garvin Moore
Lee Schwartz
Harry Tate
Irene Ellison
Irene Allen
Lynn E. Hall
Marie Daum
Seldon Bryant
Eugene Polk
Marion Thiry
Viola McLain
Elsie Bellow
Andrew Daum
Mary Gruver
Joe Uehlein
Anna Graham
Burns Wittmer
Ralph Wagner
Omer Shoemaker
Theodore Guillaum
Clara Gruver
Willma Peckinpaugh
Dean Roper
Arthur Heck
Hartnett Cullen
Ruth Gibbs
Margaret Heck
Jayne Minor
Fred Boyle
Audrey Gilbert
Marie Weatherholt
Forest Nell Mitchell
Ralladine Persinger
Leona Groves
Ann Anderson
Gladys Daugherty
Jacob Wittmer
Etta Belle Gabbert

PATRONS' PAGE

These friends of the school purchased a NOTLENNAC at one dollar, making the annual available to the students at fifty cents:

Carl Danbauer	Lacer Baker
Norman Hafele	John Conway
P. D. Augenstein	Wm. S. Conway
Orville S. Kieser	Edward A. Hemphill
Fred Harris	Elmer E. Franzman
Frank Clemens, Jr.	Bennett Peckinpaugh
John Minto	Ivo Huber
Mildred Ramsey	G. Ralph Wagner
Marion V. Clemens	Vernon A. Hafele
Hazel E. Fuchs	Carl Knapp
H. W. Truempy	Edgar A. Lehman
Elmer Gilbert	Albert A. Lehman
Alfred Clemens	Albert W. Lehman, Jr.
Jos. McMahon	W. C. Livers
Earnest Weatherholt	A. G. Schmuck
Wm. G. Minor	August Heck
Frank E. Huber	Lee Rodman
James L. Polk	Charles Gerber
Dr. H. C. Richardson	J. H. Schaefer
A. P. Clemens	Thos. J. Quick
P. H. Coyle	Prentice S. Harper
G. M. Keiser	H. Conner
Hargis R. Bush, M.D.	Frank Steinsberger
Wm. Birchler	Walter Mason
Jos. B. Minor	William Waldschmidt

William C. Lehman made a substantial donation in the form of a gift to the permanent year book fund.

